

E/One Sentry Advisor

Remote Monitoring System for Sewer System Management

Description

E/One Sentry Advisor is a cellular remote system monitoring solution that provides up-to-the-minute visibility of high level alarms and pump running events. Automatically send alerts to multiple contacts via phone, e-mail, SMS text, or to an existing telemetry system.

A web-based user interface allows easy viewing and pump management from any web-enabled device. Interactive mapping feature allows easy management and physical location of all grinder pumps. Reports can be generated to monitor overall system performance.

E/One Sentry Advisor can be configured into many E/One alarm panels (both simplex and duplex). A retrofit kit for existing installations and a standalone version are also available.

Note: E/One Sentry Advisor uses a cellular machine to machine network to transmit information. Adequate cellular coverage, which may differ from standard mobile phone voice and data coverage, is required at every location where the system will be installed. Contact E/One to verify coverage.

Standard Features

Includes cellular modem, antenna, auxiliary power supply, and dry contacts for both high level alarm and pump running. Provides monitoring and visibility for:

High level alarm

Pump running

Run time history (daily, cumulative, last run, minimum/maximum/average)

Cycle history (daily and cumulative)

Extended run time alerts (cycle, daily, etc.)

Generate pump run and/or alarm event reports

Map location of each grinder pump in the system

Back-up battery for power loss notification

Optional Features (for Protect Plus Alarm Panels Only)

Brownout, over-voltage, run dry and over-pressure alerts

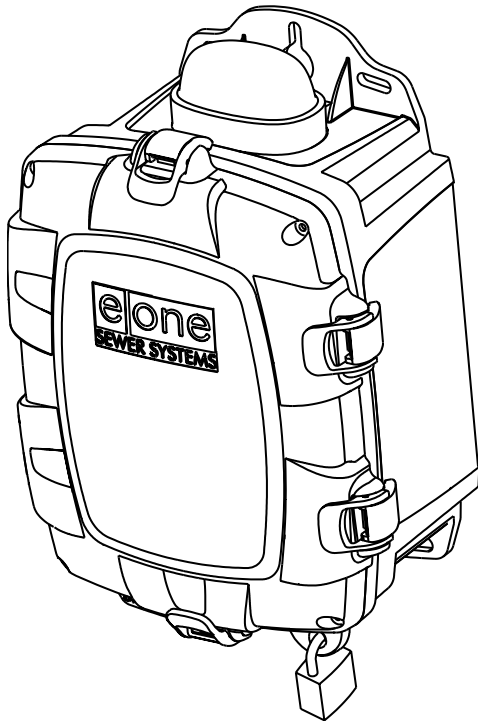
Volts, amps, watts historical information and related alerts

Detailed system status

Visibility of system settings and setting of user-defined options

Board-level fault indications (watt meter, alarm circuit protection)

Seal leak detect notification (explosionproof pumps only)



E/ONE SENTRY ADVISOR BASIC SENTRY SIMPLEX

REMOTE MONITORING OF:

- HIGH LEVEL ALARM
- PUMP RUNNING

WEB INTERFACE PROVIDES:

- RUN TIME HISTORY
 - DAILY, CUMULATIVE, LAST, MIN., MAX., AVG.
- CYCLE HISTORY
 - DAILY, CUMULATIVE
- EXTENDED RUN TIME ALERTS
 - CYCLE, DAILY
- GENERATE PUMP RUN AND/OR ALARM EVENT REPORTS
- MAP LOCATION OF EACH GRINDER PUMP IN THE SYSTEM WITH STATUS INDICATION

BACKUP BATTERY FOR POWER LOSS NOTIFICATION

USES EXISTING BOARD ALARM DRY CONTACTS

FACTORY INSTALLED, RETROFIT, OR STANDALONE CONFIGURATIONS AVAILABLE

OPERATING TEMPERATURE RANGE:

- -20C TO +70C

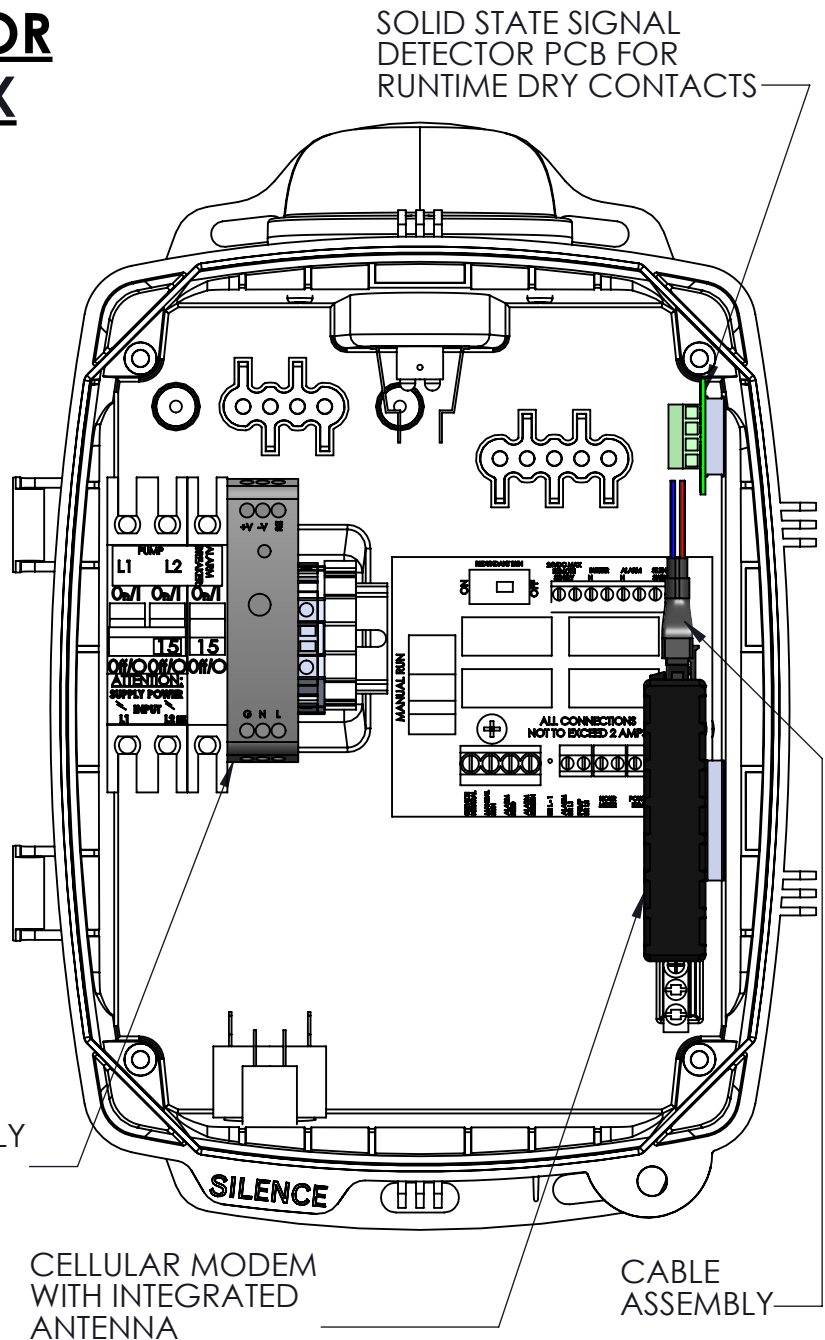
INPUT VOLTAGE:

- 85 - 264VAC

MODEM CONTAINS:

- 2 AUXILIARY A-D INPUTS
- 2 SERIAL CHANNELS
- 5 AUXILIARY DIGITAL INPUTS

DC POWER SUPPLY FOR MODEM



TYPICAL SENTRY PANEL IN SENTRY ENCLOSURE, SHOWN FOR REF. ENCLOSURE DOOR NOT SHOWN

jreibson	11/08/2013	SGS	C	7/31/2019
DR BY	DATE	CHK'D	ISSUE	DATE



ENVIRONMENT ONE CORPORATION

CUT SHEET, ADVISOR, BASIC SENTRY

240V, 2P

NA0440P02



E/ONE SENTRY ADVISOR SIMPLEX PROTECT / PROTECT PLUS

REMOTE MONITORING OF:

- HIGH LEVEL ALARM
- PUMP RUNNING

WEB INTERFACE PROVIDES:

- RUN TIME HISTORY
 - DAILY, CUMULATIVE, LAST, MIN., MAX., AVG.
- CYCLE HISTORY
 - DAILY, CUMULATIVE
- EXTENDED RUN TIME ALERTS
 - CYCLE, DAILY
- GENERATE PUMP RUN AND/OR ALARM EVENT REPORTS
- MAP LOCATION OF EACH GRINDER PUMP IN THE SYSTEM WITH STATUS INDICATION

BACKUP BATTERY FOR POWER LOSS NOTIFICATION

USES EXISTING BOARD ALARM DRY CONTACTS

FACTORY INSTALLED, RETROFIT, OR STANDALONE CONFIGURATIONS AVAILABLE

OPERATING TEMPERATURE RANGE:

- -20C TO +70C

INPUT VOLTAGE:

- 85 - 264VAC

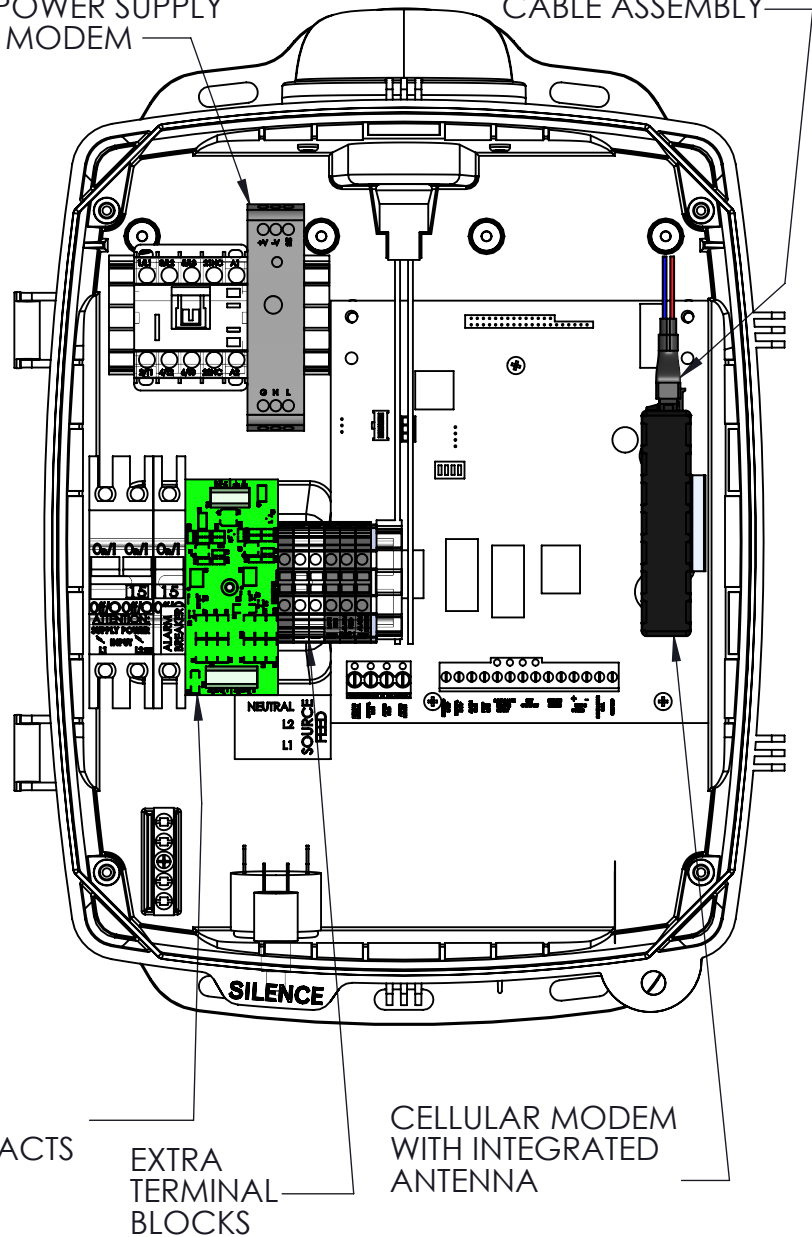
MODEM CONTAINS:

- 2 AUXILIARY A-D INPUTS
- 2 SERIAL CHANNELS
- 5 AUXILIARY DIGITAL INPUTS

SOLID STATE SIGNAL DETECTOR PCB FOR RUNTIME DRY CONTACTS

DC POWER SUPPLY FOR MODEM

CABLE ASSEMBLY



OPTIONAL FEATURES (REQUIRES PROTECT PLUS)

- BROWNOUT AND OVER-VOLTAGE ALERTS
- RUN DRY AND OVER-PRESSURE ALERTS
- VOLTS, AMPS, WATTS HISTORICAL INFORMATION
- VOLTS, AMPS, WATTS RELATED ALERTS
- DETAILED SYSTEM STATUS
- VISIBILITY OF SYSTEM SETTINGS
- VISIBILITY AND SETTING OF USER DEFINED OPTIONS
- BOARD-LEVEL FAULT INDICATIONS (DIP SWITCH, WATT METER, ALARM CIRCUIT PROTECTION)
- SEAL LEAK DETECT NOTIFICATION (WIRELESS PUMPS ONLY)

TYPICAL PROTECT/PROTECT PLUS PANEL IN SENTRY ENCLOSURE, SHOWN FOR REF. ENCLOSURE DOOR AND DEADFRONT NOT SHOWN

jreibson	11/07/2013	CTT	B	6/28/2019
DR BY	DATE	CHK'D	ISSUE	DATE



ENVIRONMENT ONE CORPORATION

CUT SHEET, ADVISOR, SIM PROT / +
240V, 2P

NA0440P03



E/ONE SENTRY ADVISOR T260 DUPLEX

REMOTE MONITORING OF:

- HIGH LEVEL ALARM
- PUMP RUNNING

WEB INTERFACE PROVIDES:

- RUN TIME HISTORY
 - DAILY, CUMULATIVE, LAST, MIN., MAX., AVG.
- CYCLE HISTORY
 - DAILY, CUMULATIVE
- EXTENDED RUN TIME ALERTS
 - CYCLE, DAILY
- GENERATE PUMP RUN AND/OR ALARM EVENT REPORTS
- MAP LOCATION OF EACH GRINDER PUMP IN THE SYSTEM WITH STATUS INDICATION

BACKUP BATTERY FOR POWER LOSS NOTIFICATION

USES EXISTING BOARD ALARM DRY CONTACTS

FACTORY INSTALLED, RETROFIT, OR STANDALONE CONFIGURATIONS AVAILABLE

OPERATING TEMPERATURE RANGE:

- -20C TO +70C

INPUT VOLTAGE:

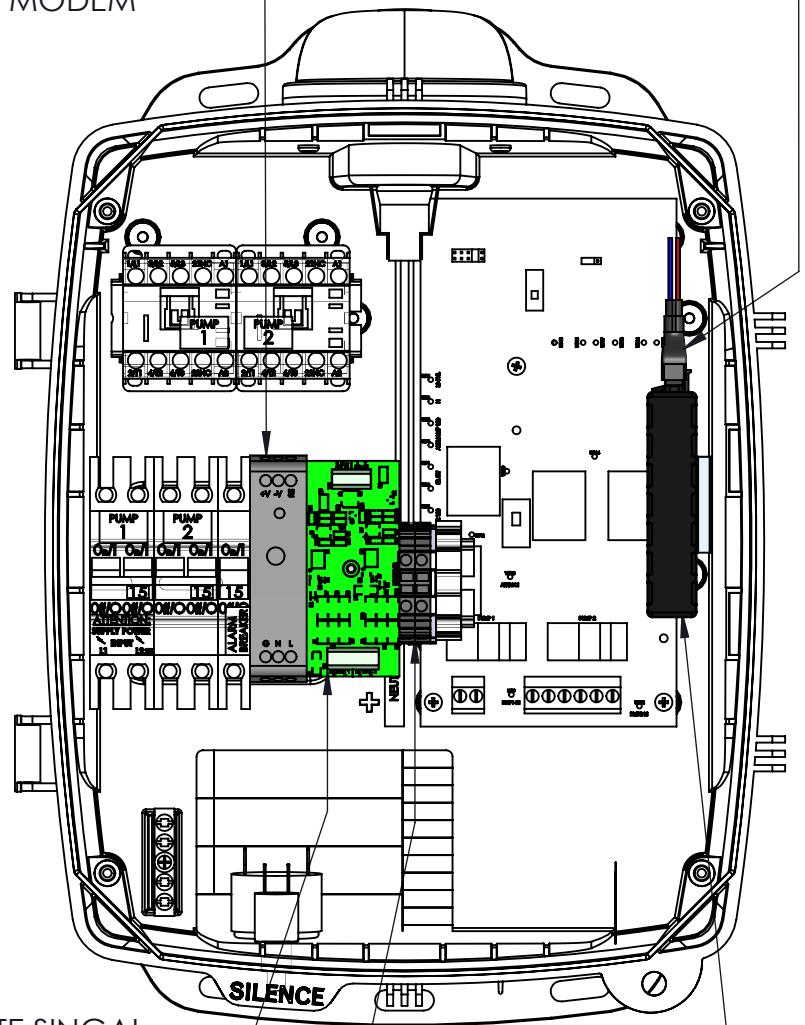
- 85 - 264VAC

MODEM CONTAINS:

- 2 AUXILIARY A-D INPUTS
- 2 SERIAL CHANNELS
- 5 AUXILIARY DIGITAL INPUTS

DC POWER SUPPLY FOR MODEM

CABLE ASSEMBLY



SOLID STATE SINGAL DETECTOR PBC FOR RUNTIME DRY CONTACTS

EXTRA TERMINAL BLOCKS

CELLULAR MODEM WITH INTEGRATED ANTENNA

TYPICAL MOD T260 PANEL IN SENTRY ENCLOSURE, SHOWN FOR REF. ENCLOSURE DOOR NOT SHOWN

jreibson	11/7/2013	CTT	B	6/20/2019
DR BY	DATE	CHK'D	ISSUE	DATE



ENVIRONMENT ONE CORPORATION

CUT SHEET, ADVISOR, T260
240V, 2P

NA0440P04



E/ONE SENTRY ADVISOR DUPLEX PROTECT PLUS

REMOTE MONITORING OF:

- HIGH LEVEL ALARM
- PUMP RUNNING

WEB INTERFACE PROVIDES:

- RUN TIME HISTORY
 - DAILY, CUMULATIVE, LAST, MIN., MAX., AVG.
- CYCLE HISTORY
 - DAILY, CUMULATIVE
- EXTENDED RUN TIME ALERTS
 - CYCLE, DAILY
- GENERATE PUMP RUN AND/OR ALARM EVENT REPORTS
- MAP LOCATION OF EACH GRINDER PUMP IN THE SYSTEM WITH STATUS INDICATION

BACKUP BATTERY FOR POWER LOSS NOTIFICATION

USES EXISTING BOARD ALARM DRY CONTACTS

FACTORY INSTALLED, RETROFIT, OR STANDALONE CONFIGURATIONS AVAILABLE

OPERATING TEMPERATURE RANGE:

- -20C TO +70C

INPUT VOLTAGE:

- 85 - 264VAC

MODEM CONTAINS:

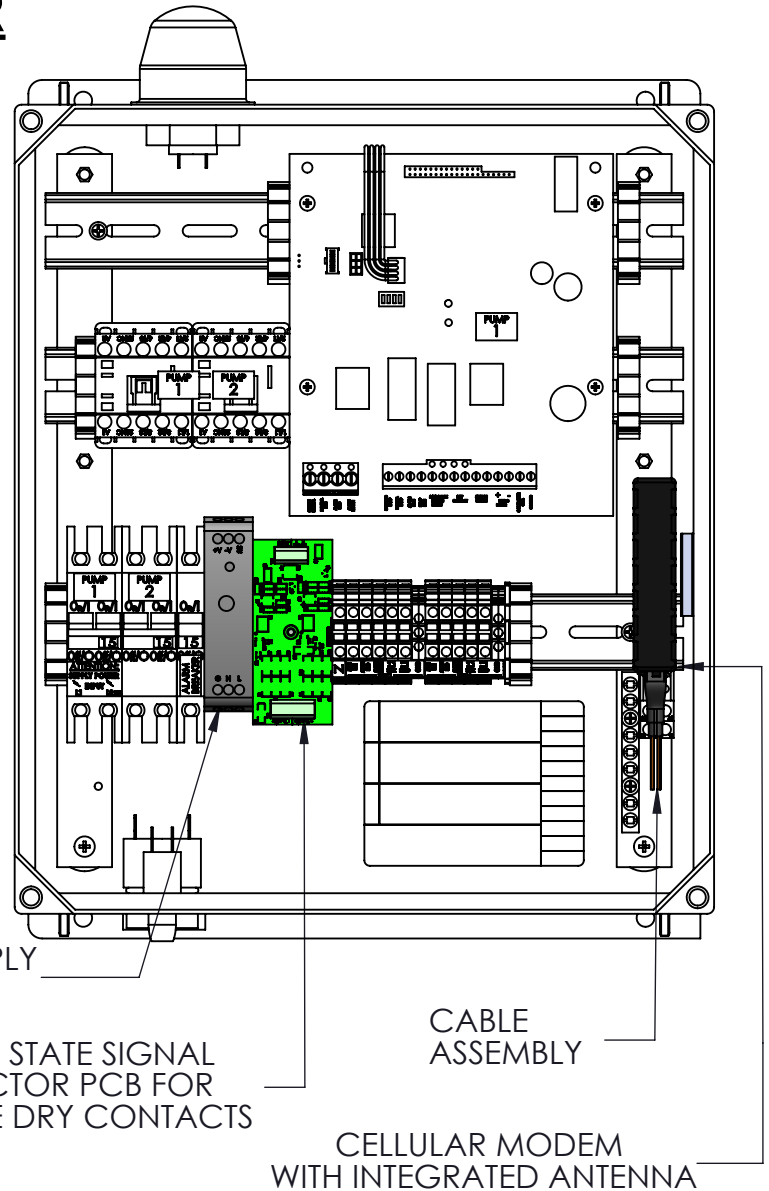
- 2 AUXILIARY A-D INPUTS
- 2 SERIAL CHANNELS
- 5 AUXILIARY DIGITAL INPUTS

DC POWER SUPPLY FOR MODEM

SOLID STATE SIGNAL DETECTOR PCB FOR RUNTIME DRY CONTACTS

CABLE ASSEMBLY

CELLULAR MODEM WITH INTEGRATED ANTENNA



OPTIONAL FEATURES

- BROWNOUT AND OVER-VOLTAGE ALERTS
- RUN DRY AND OVER-PRESSURE ALERTS
- VOLTS, AMPS, WATTS HISTORICAL INFORMATION
- VOLTS, AMPS, WATTS RELATED ALERTS
- DETAILED SYSTEM STATUS
- VISIBILITY OF SYSTEM SETTINGS
- VISIBILITY AND SETTING OF USER-DEFINED OPTIONS
- BOARD-LEVEL FAULT INDICATIONS (DIP SWITCH, WATT METER, ALARM CIRCUIT PROTECTION)
- SEAL LEAK DETECT NOTIFICATION (WIRELESS PUMPS ONLY)

TYPICAL DUPLEX PROTECT PLUS PANEL IN FIBERGLASS ENCLOSURE, SHOWN FOR REF. ENCLOSURE DOOR AND DEADFRONT NOT SHOWN

DMS	11/7/2013	CTT	B	6/27/2019
DR BY	DATE	CHK'D	ISSUE	DATE



ENVIRONMENT ONE CORPORATION

CUT SHEET, ADVISOR, DUP PROT +
240V, 2P

NA0440P05

