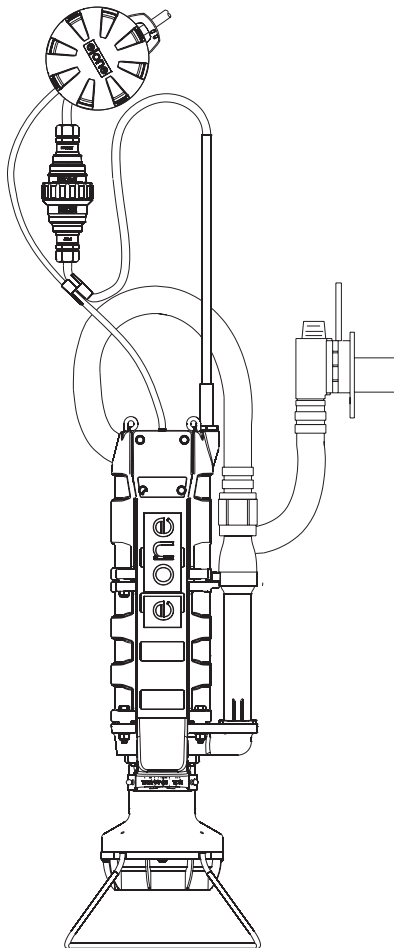


# Upgrade

## General Features

The Upgrade grinder pump is engineered to fit into virtually any grinder pump wetwell. Universal design allows easy drop-in conversion, ready to connect. The Upgrade is a complete replacement for all of the troublesome components of a centrifugal pump station, including the old unit's slide rails, pump/motor, float switches, piping, and motor control devices.

- Designed not to jam and for minimum wear to the grinding mechanism
- Retrofit simplex or larger stations
- Available with a range of discharge hose lengths to accommodate a wide range of tank depths



The Upgrade comes complete with a self-contained level control system, eliminating troublesome float switches. The internal check valve assembly located on the grinder pump is custom designed for non-clog, trouble-free operation. The Upgrade uses E/One's "hardwired," or "wired," pump model where a cable connects the motor controls to the level controls through watertight penetrations.

## Operational Information

### *Motor*

1 hp, 1,725 rpm, high torque, capacitor start, thermally protected, 120/240V, 60 Hz, 1 phase

### *Discharge Connections*

Pump discharge terminates in 1.25-inch female solvent weld fitting; threaded adapter is supplied and discharge can easily be adapted to 1.25-inch NPT.

### *Discharge*

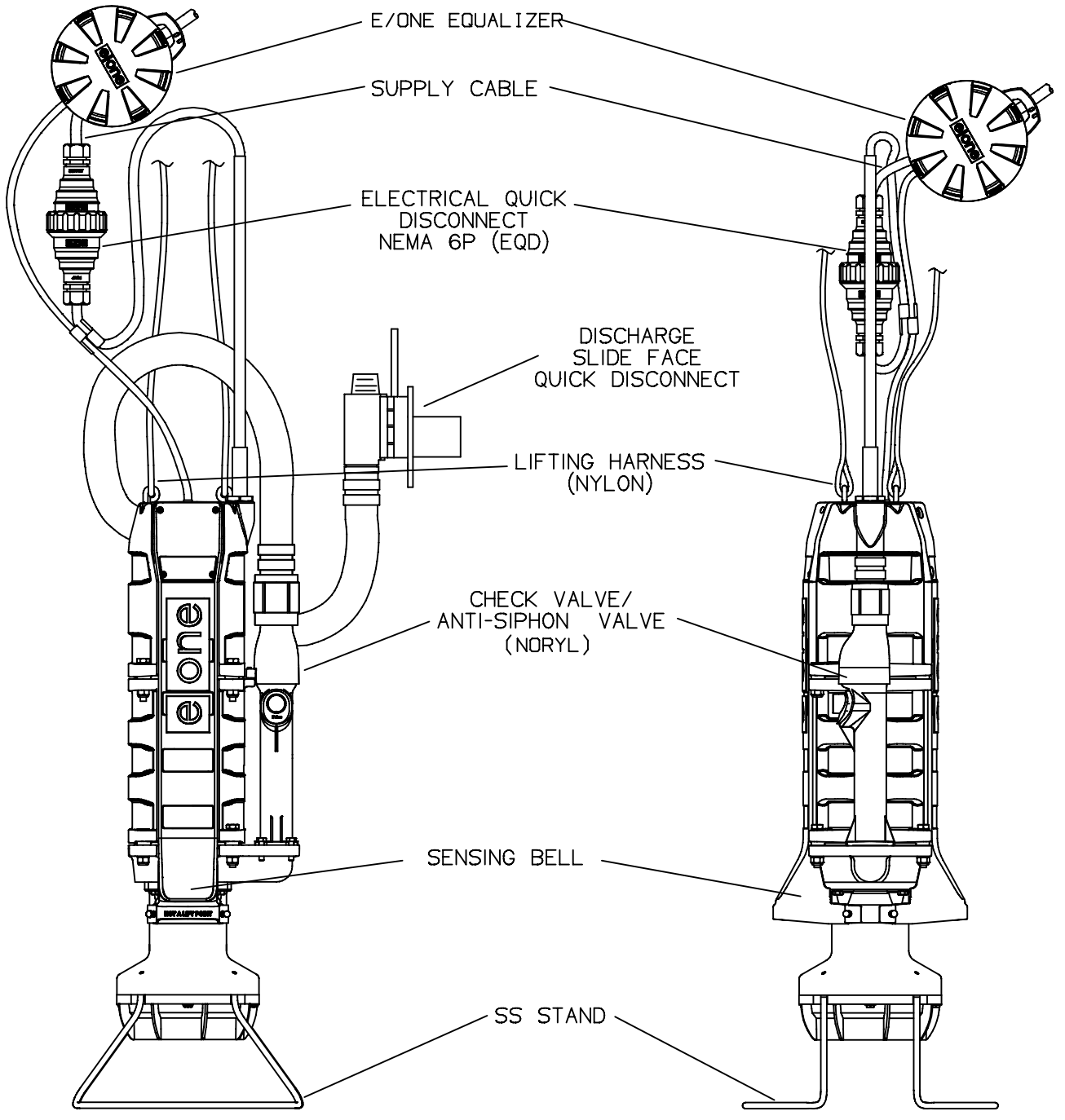
15 gpm at 0 psig (0.95 lps at 0 m)  
11 gpm at 40 psig (0.69 lps at 28 m)  
7.8 gpm at 80 psig (0.49 lps at 56 m)

## Accessories

E/One recommends that the Uni-Lateral, E/One's own stainless steel check valve, be installed between the grinder pump station and the street main for added protection against backflow.

Alarm panels are available with a variety of options, from basic monitoring to advanced notice of service requirements.

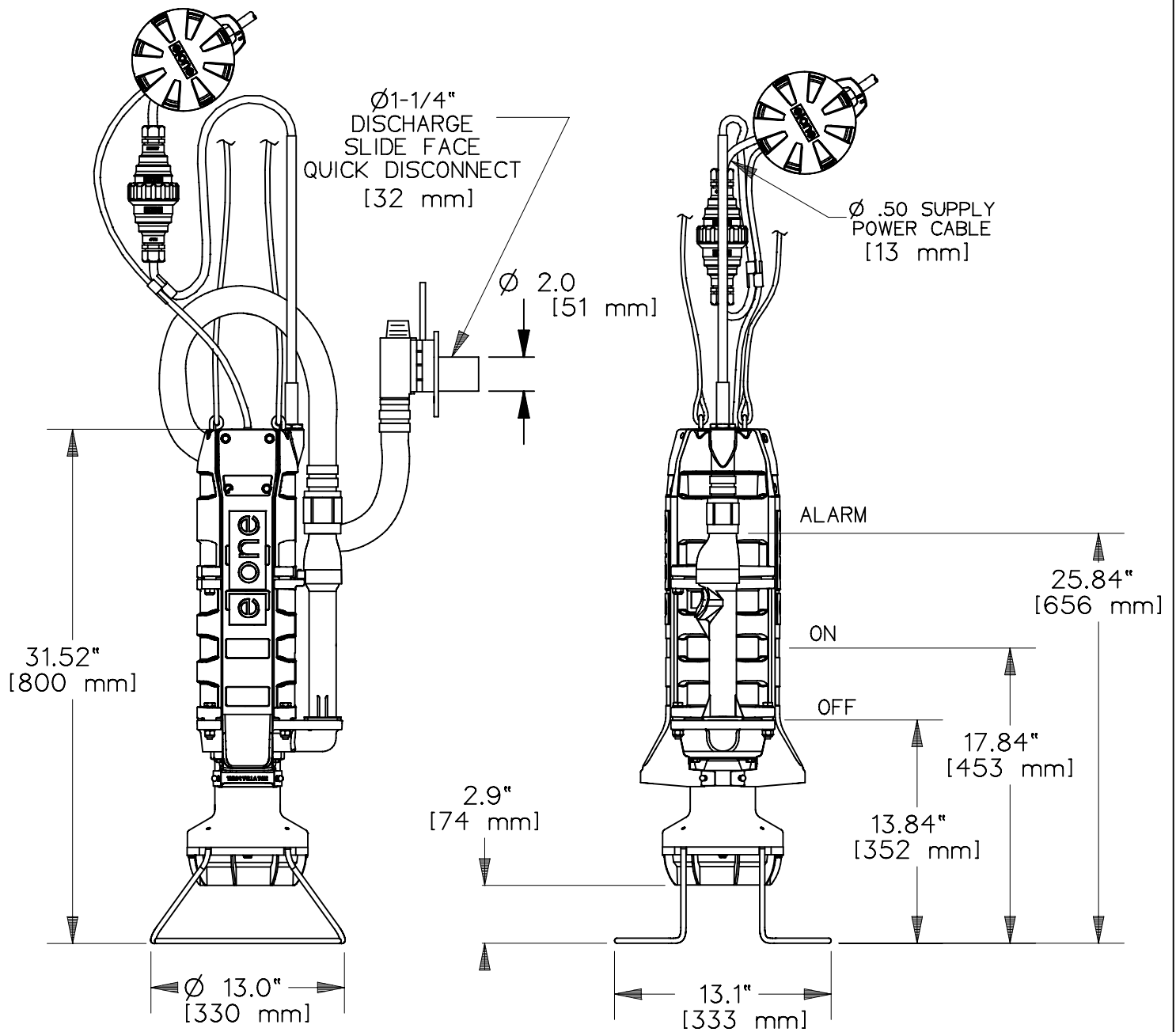
The Remote Sentry is ideal for installations where the alarm panel may be hidden from view.



# UPGRADE GRINDER PUMP



LNT	GAE	04/24/07	-	
DR BY	CHK'D	DATE	ISSUE	SCALE
UPGRADE FEATURES				
NA0055P01				



CTT		12/10/10	B	
DR BY	CHK'D	DATE	ISSUE	SCALE

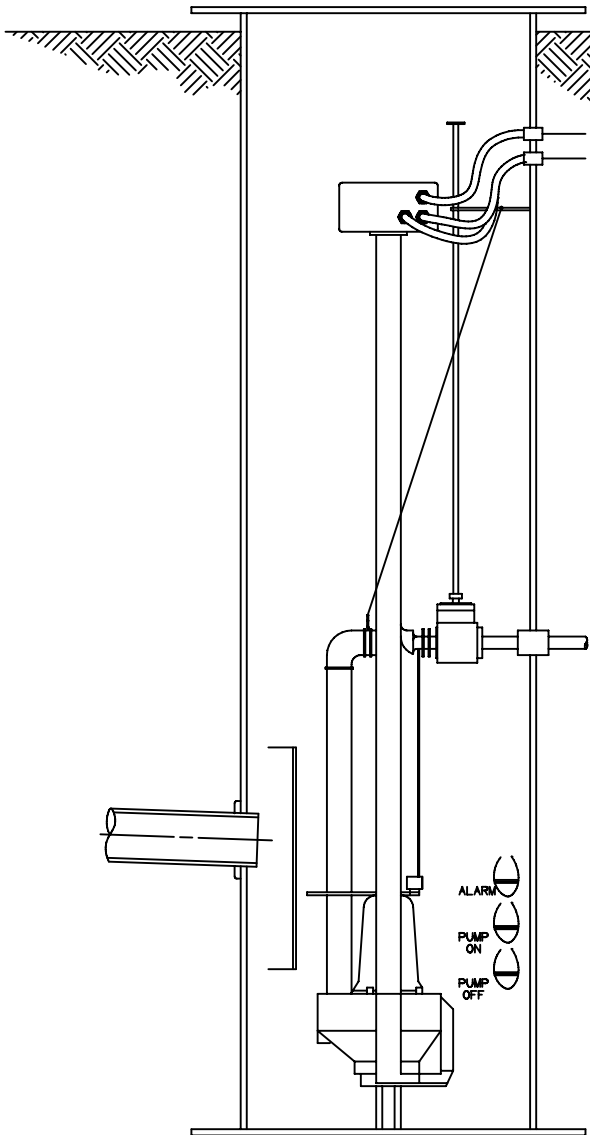
# UPGRADE GRINDER PUMP



DIMENSION SHEET, UPGRADE

NA0055P02

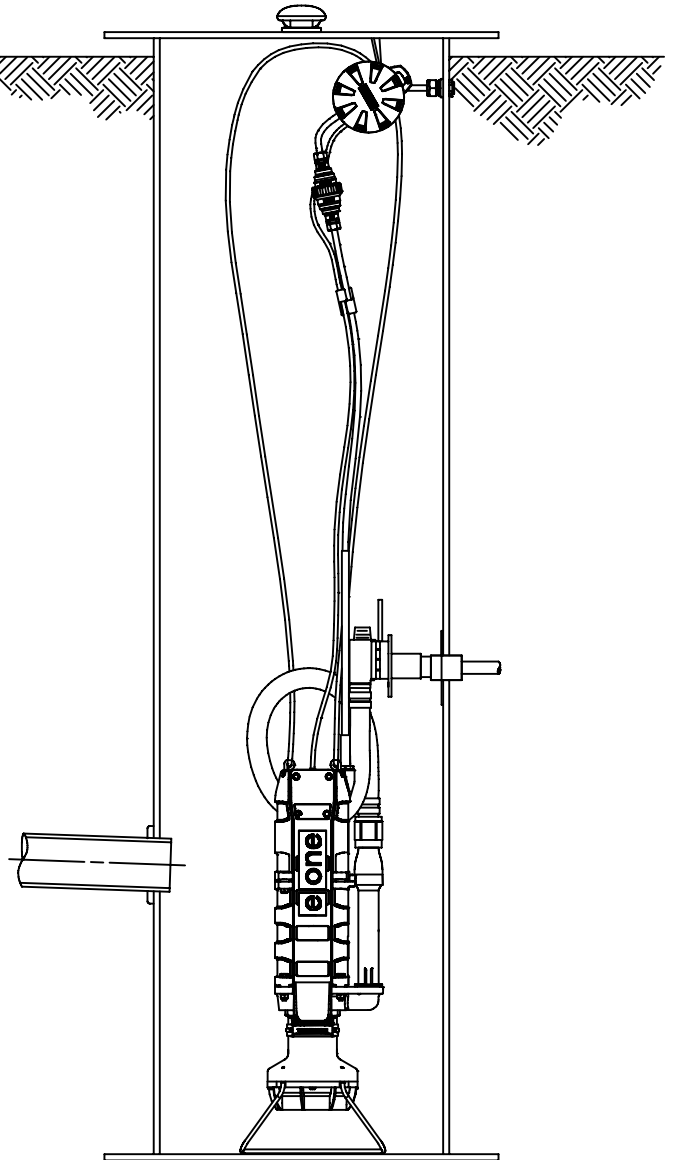
BEFORE



CENTRIFUGAL STATION  
TO BE UPGRADED

TO...

AFTER



**eone** UPGRADE



\* IN THE MAJORITY OF UPGRADE INSTALLATIONS  
THE EXISTING INLET, DISCHARGE, AND  
POWER SUPPLY CABLES CAN BE UTILIZED  
WITHOUT MODIFICATION INCLUDING J-BOX  
AND FEED-THRU'S

LNT	GAE	04/24/07	-	
DR BY	CHK'D	DATE	ISSUE	SCALE

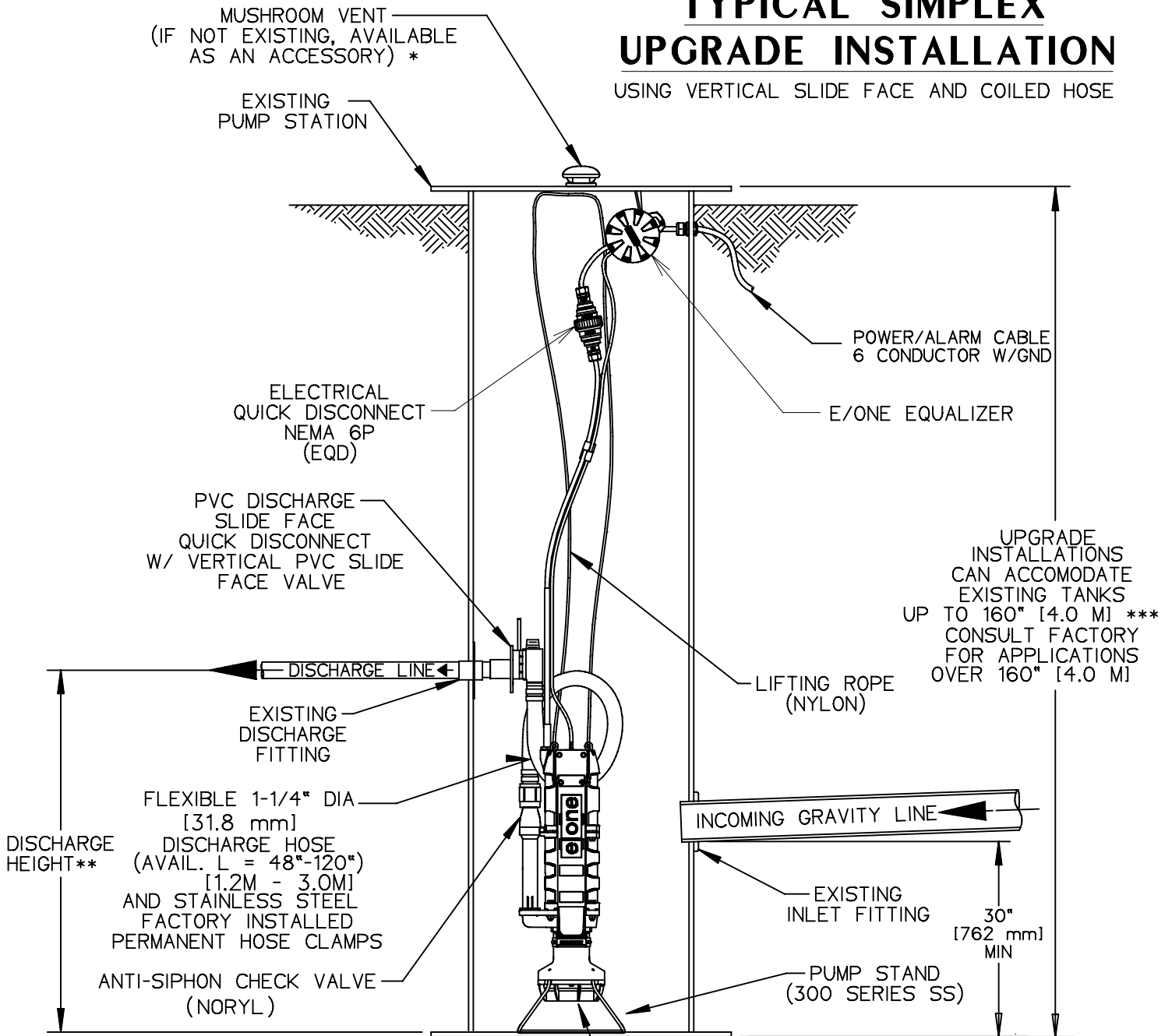
**eone**  
SEWER SYSTEMS

REPLACEMENT ILLUSTRATION

NA0055P03

# TYPICAL SIMPLEX UPGRADE INSTALLATION

USING VERTICAL SLIDE FACE AND COILED HOSE



UPGRADE  
INSTALLATIONS  
CAN ACCOMMODATE  
EXISTING TANKS  
UP TO 160" [4.0 M] \*\*\*  
CONSULT FACTORY  
FOR APPLICATIONS  
OVER 160" [4.0 M]

SEMI-POSITIVE DISPLACEMENT TYPE PUMP.  
EACH DIRECTLY DRIVEN BY A 1 HP MOTOR



CTT		12/10/10	C	
DR BY	CHK'D	DATE	ISSUE	SCALE



DETAIL SHEET, UPGRADE SIMPLEX  
VERTICAL SLIDE FACE, COILED HOSE

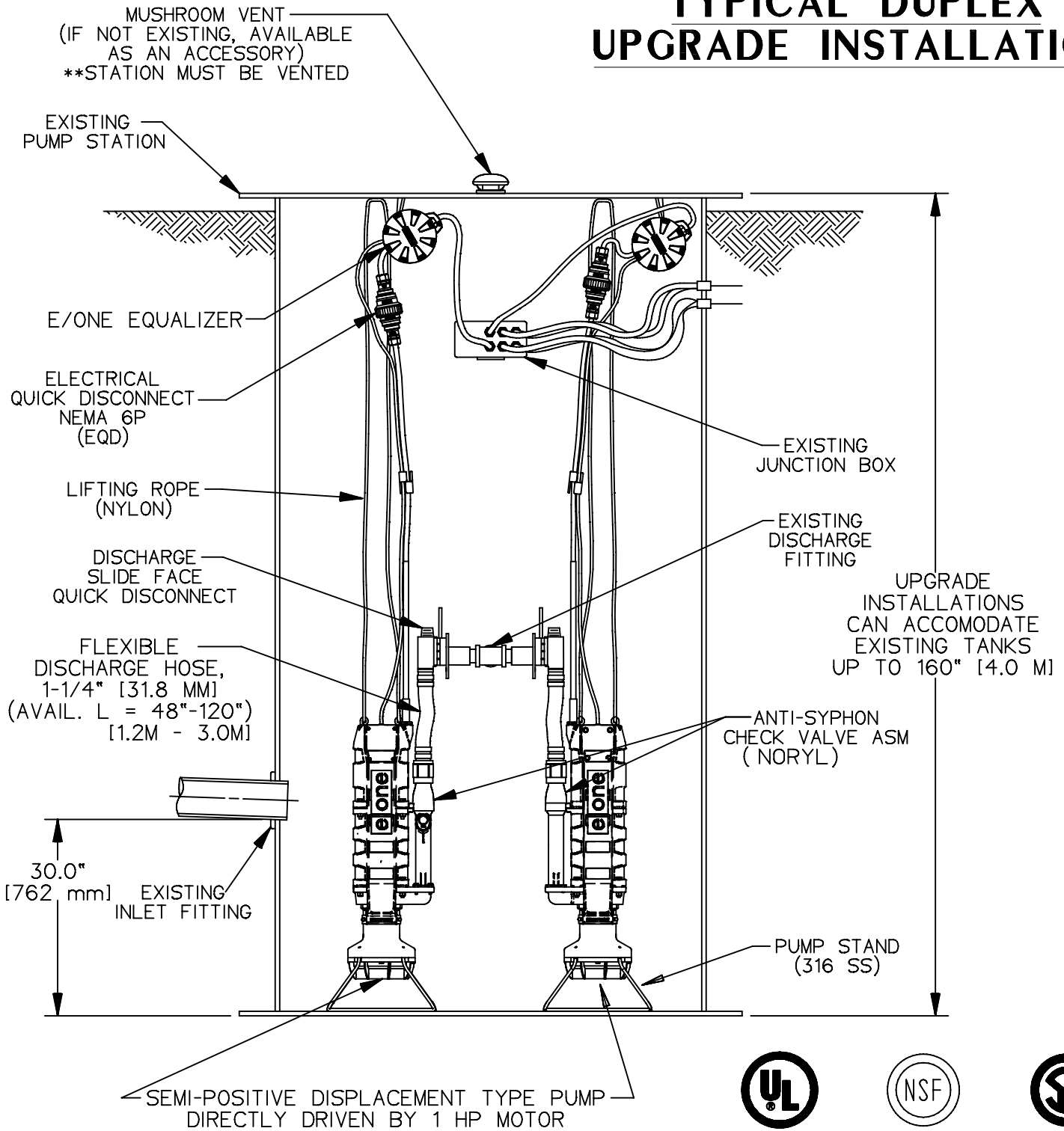
NA0055P04

\* STATION MUST BE VENTED

\*\* DISCHARGE HEIGHT MUST BE KNOWN WITHIN 3 FEET [1.0 M]  
TO ORDER PROPER KIT

\*\*\* DISCHARGE HEIGHT MUST NOT BE GREATER THAN 160 INCHES [4.0 M]

# TYPICAL DUPLEX UPGRADE INSTALLATION

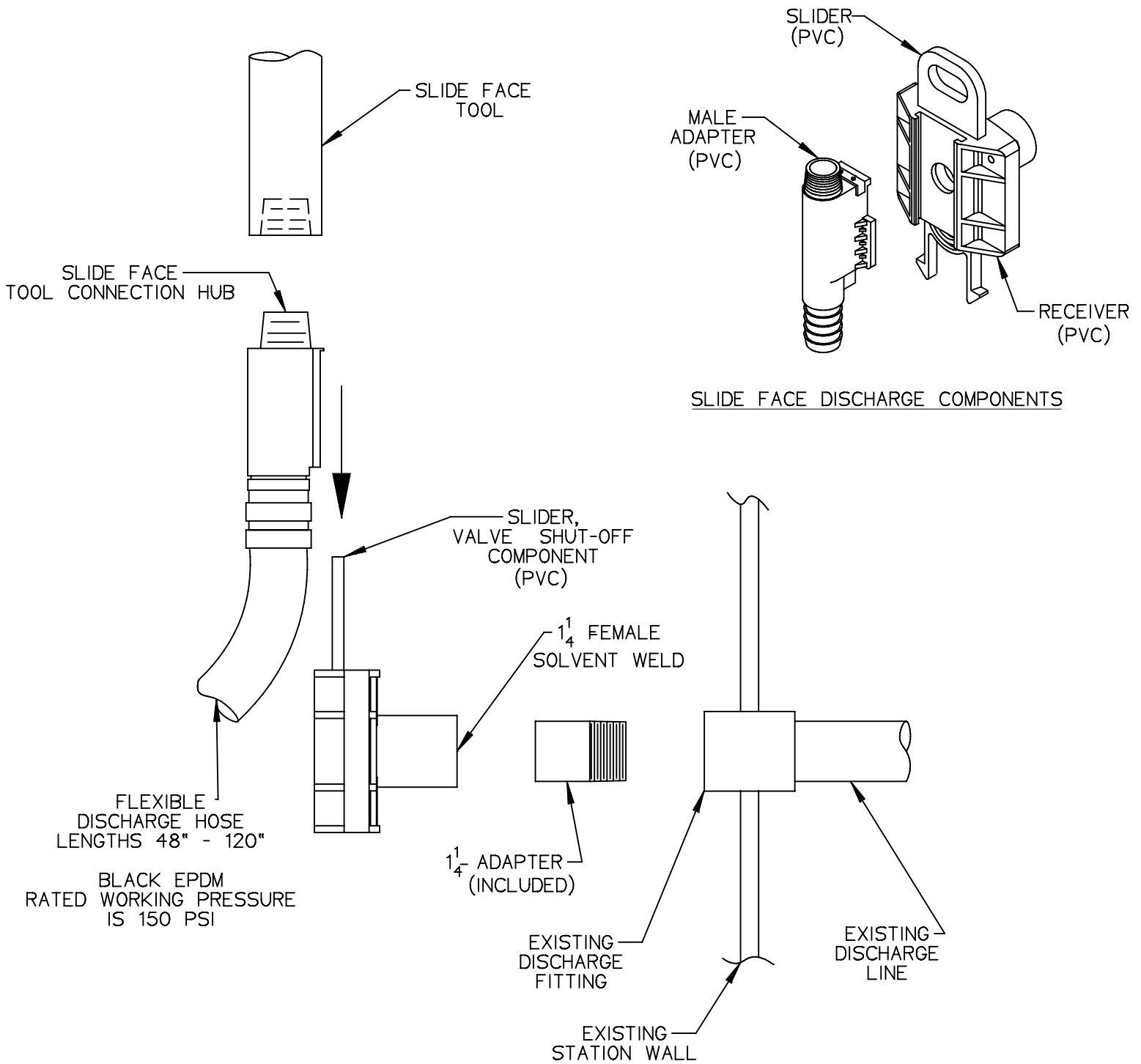


LNT		12/10/10	A	
DR BY	CHK'D	DATE	ISSUE	SCALE



DETAIL SHEET, UPGRADE DUPLEX  
TYPICAL DROP-IN EXISTING STATION

NA0055P05



**DISCHARGE HOSE AND DISCONNECT/VALVE:** All discharge fittings and piping shall be constructed of polypropylene, EPDM or PVC. The discharge hose assembly shall include a shut-off valve rated for 200 psi WOG and a quick disconnect feature to simplify installation and pump removal. The bulkhead penetration shall be factory installed and warranted by the manufacturer to be watertight.

## SLIDE FACE ASSEMBLY



SGS		08/09/12	3	1/16
DR BY	CHK'D	DATE	ISSUE	SCALE



SLIDEFACE DISCHARGE DETAIL

ESD 09-0136