

## WH231

### General Features

The model WH231 grinder pump station is a complete unit that includes: the grinder pump, check valve, polyethylene tank, controls, and alarm panel. The lower portion of the tank has a smaller diameter, tapered down to a dish-shaped bottom. These design features reduce the retained volume and promote scouring, which will minimize odor and corrosiveness.

- Rated for flows of 850 gpd (3218 lpd)
- 237 gallons (874 liters) of capacity
- Standard outdoor heights range from 55 inches to 92 inches

The WH231 has a cable that connects the motor controls to the level controls through watertight penetrations.

### Operational Information

#### *Motor*

1 hp, 1,725 rpm, high torque, capacitor start, thermally protected, 120/240V, 60 Hz, 1 phase

#### *Inlet Connections*

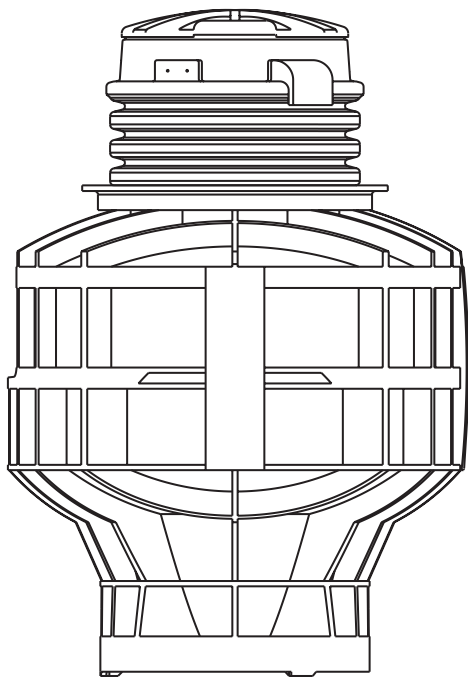
4-inch inlet grommet standard for DWV pipe. Other inlet configurations available from the factory.

#### *Discharge Connections*

Pump discharge terminates in 1.25-inch NPT female thread. Can easily be adapted to 1.25-inch PVC pipe or any other material required by local codes.

#### *Discharge*

15 gpm at 0 psig (0.95 lps at 0 m)  
11 gpm at 40 psig (0.69 lps at 28 m)  
7.8 gpm at 80 psig (0.49 lps at 56 m)



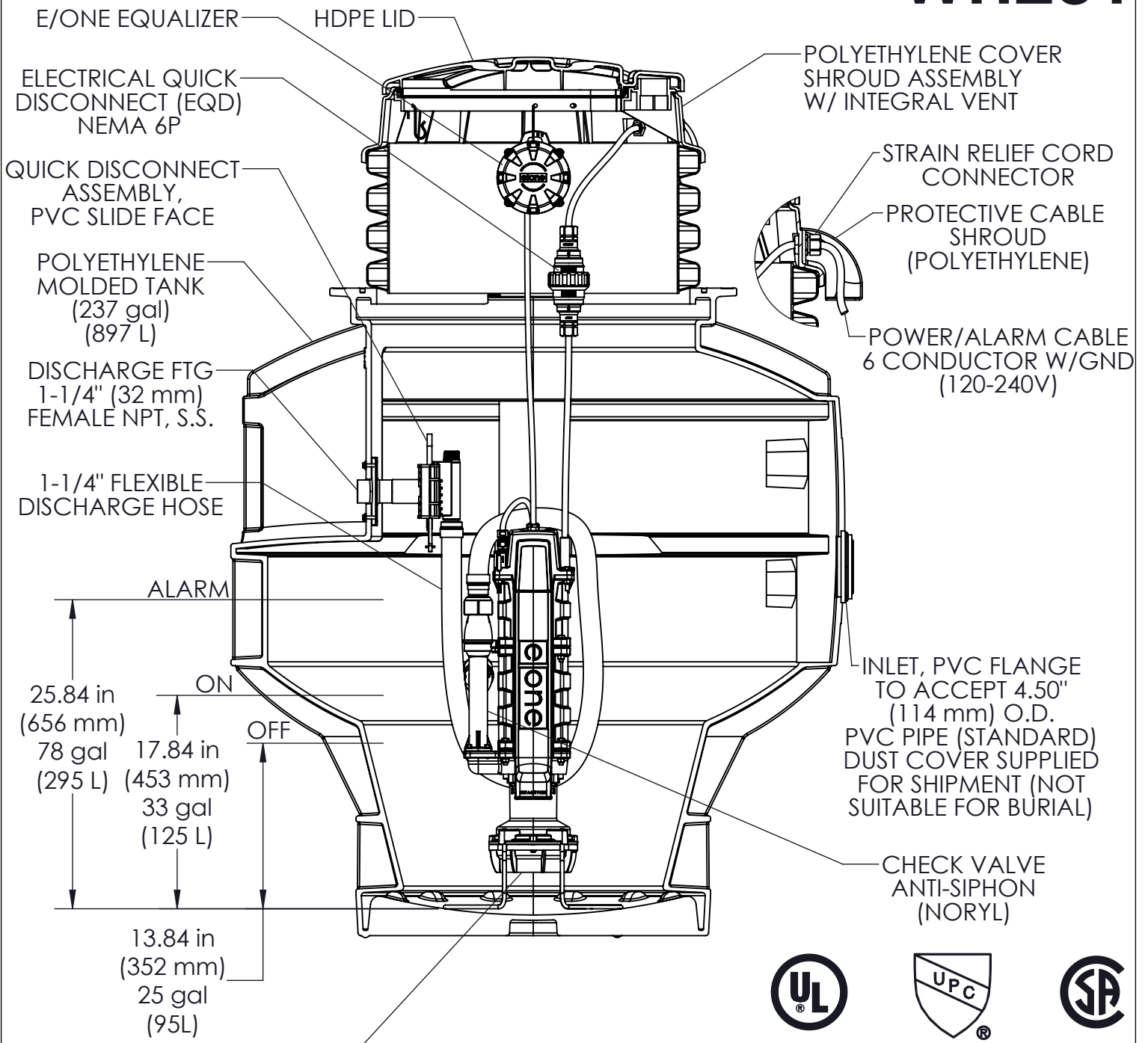
### Accessories

E/One requires that the Uni-Lateral, E/One's own stainless steel check valve, be installed between the grinder pump station and the street main for added protection against backflow.

Alarm panels are available with a variety of options, from basic monitoring to advanced notice of service requirements.

The Remote Sentry is ideal for installations where the alarm panel may be hidden from view.

# WH231



ALARM

25.84 in (656 mm)

78 gal (295 L)

ON

17.84 in (453 mm)

33 gal (125 L)

OFF

13.84 in (352 mm)

25 gal (95L)

SEMI-POSITIVE DISPLACEMENT TYPE PUMP DIRECTLY DRIVEN BY A 1 HP MOTOR

CONCRETE BALLAST MAY BE REQUIRED SEE INSTALLATION INSTRUCTIONS FOR DETAILS

NOTE: DIMENSIONS ARE FOR REFERENCE ONLY



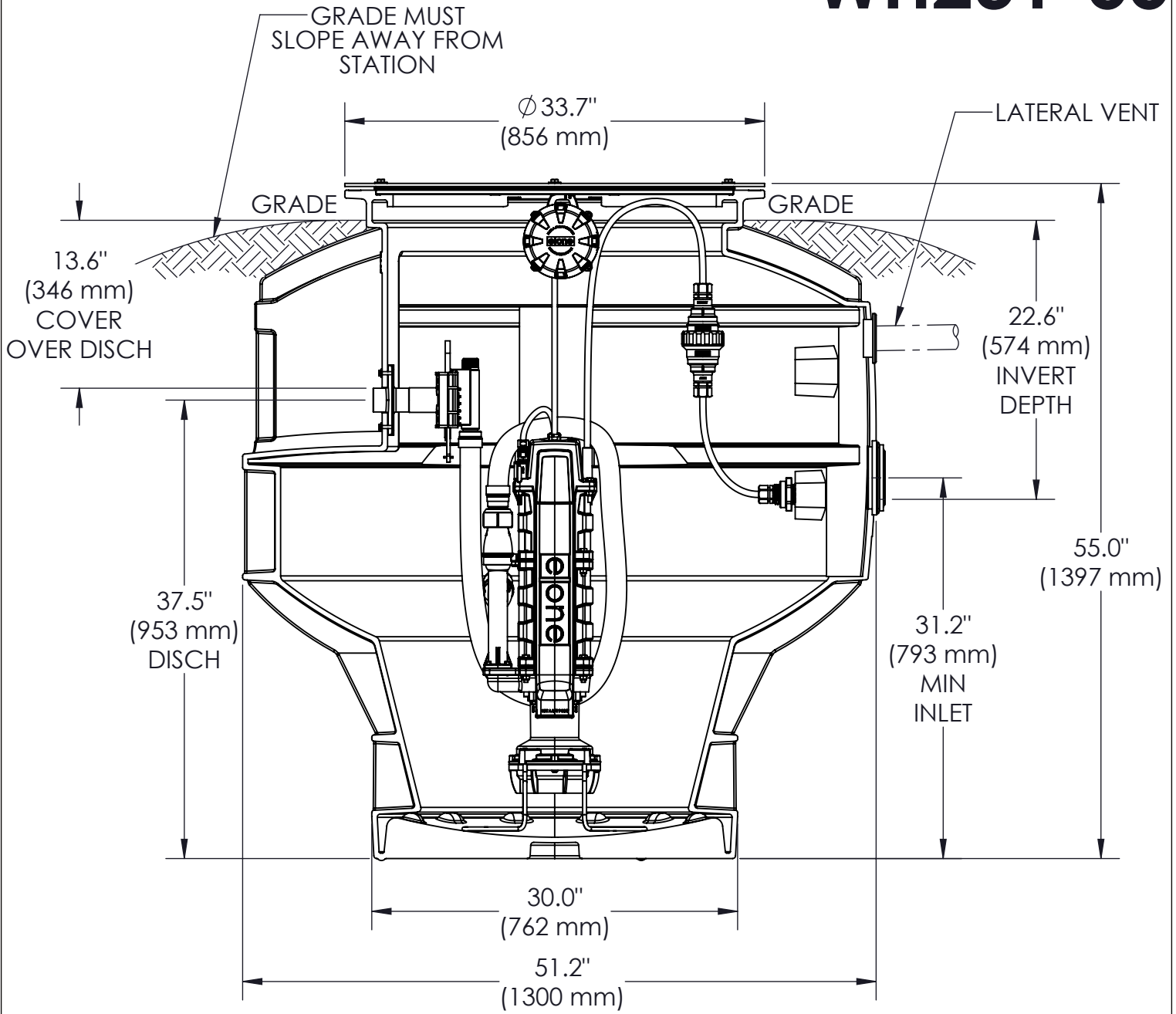
JVL	JG	6/25/2024	H	1:12
DR BY	CHK'D	DATE	ISSUE	SCALE



MODEL WH231  
DETAIL SHEET

NA0059P02

# WH231-55



CONCRETE BALLAST MAY BE REQUIRED  
SEE INSTALLATION INSTRUCTIONS FOR DETAILS

NOTE: DIMENSIONS ARE FOR REFERENCE ONLY

DISCHARGE: 1-1/4" NPT, SS

INLET: EPDM GROMMET FOR 4" DWV  
PIPE (STANDARD)



JVL	JG	6/26/2024	F	1:12
DR BY	CHK'D	DATE	ISSUE	SCALE

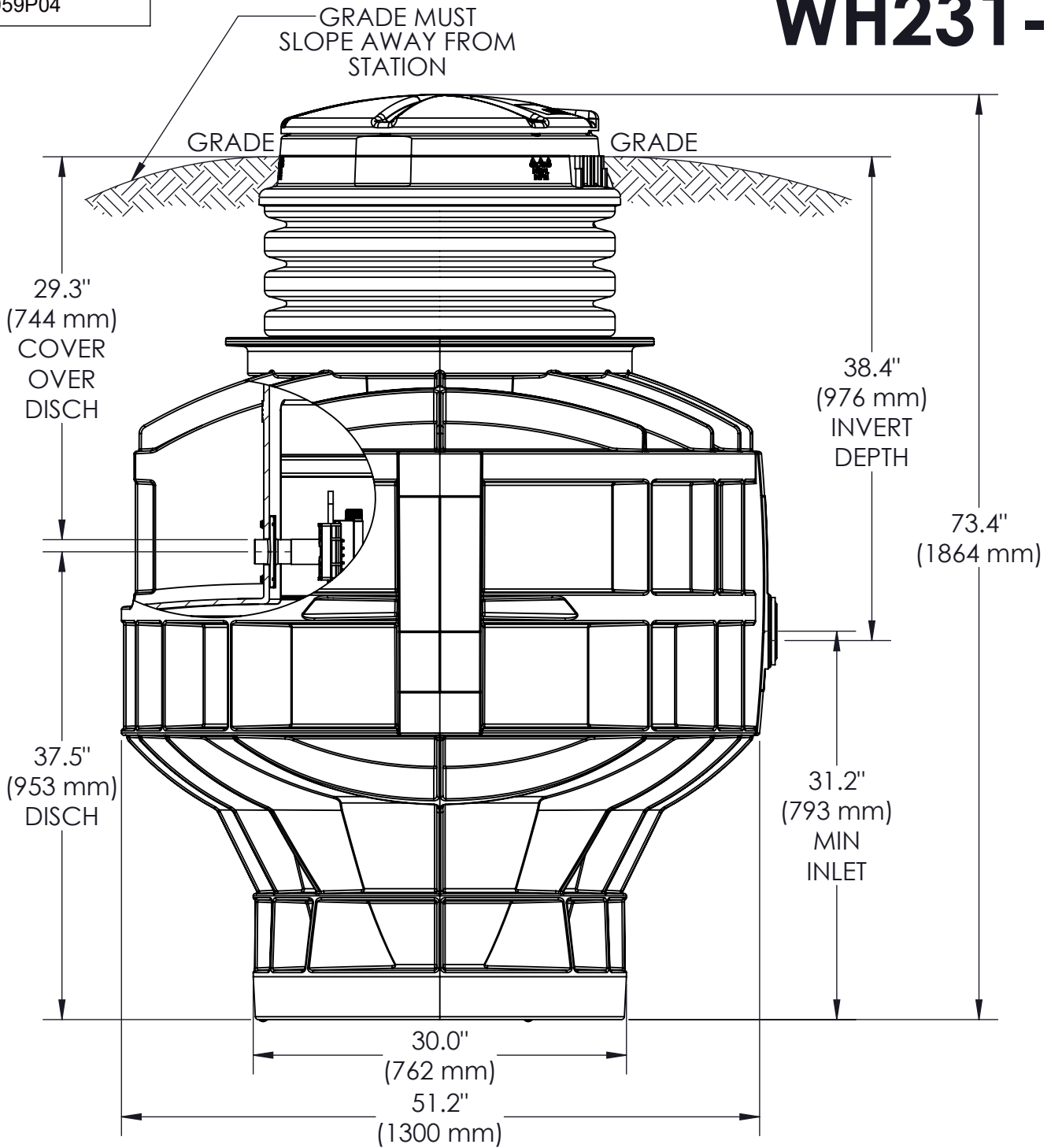


MODEL WH231-55

NA0059P03

NA0059P04

# WH231-73



CONCRETE BALLAST MAY BE REQUIRED  
SEE INSTALLATION INSTRUCTIONS FOR DETAILS

NOTE: DIMENSIONS ARE FOR REFERENCE ONLY

DISCHARGE: 1-1/4" NPT, SS

INLET: EPDM GROMMET FOR 4" DWV  
PIPE (STANDARD)



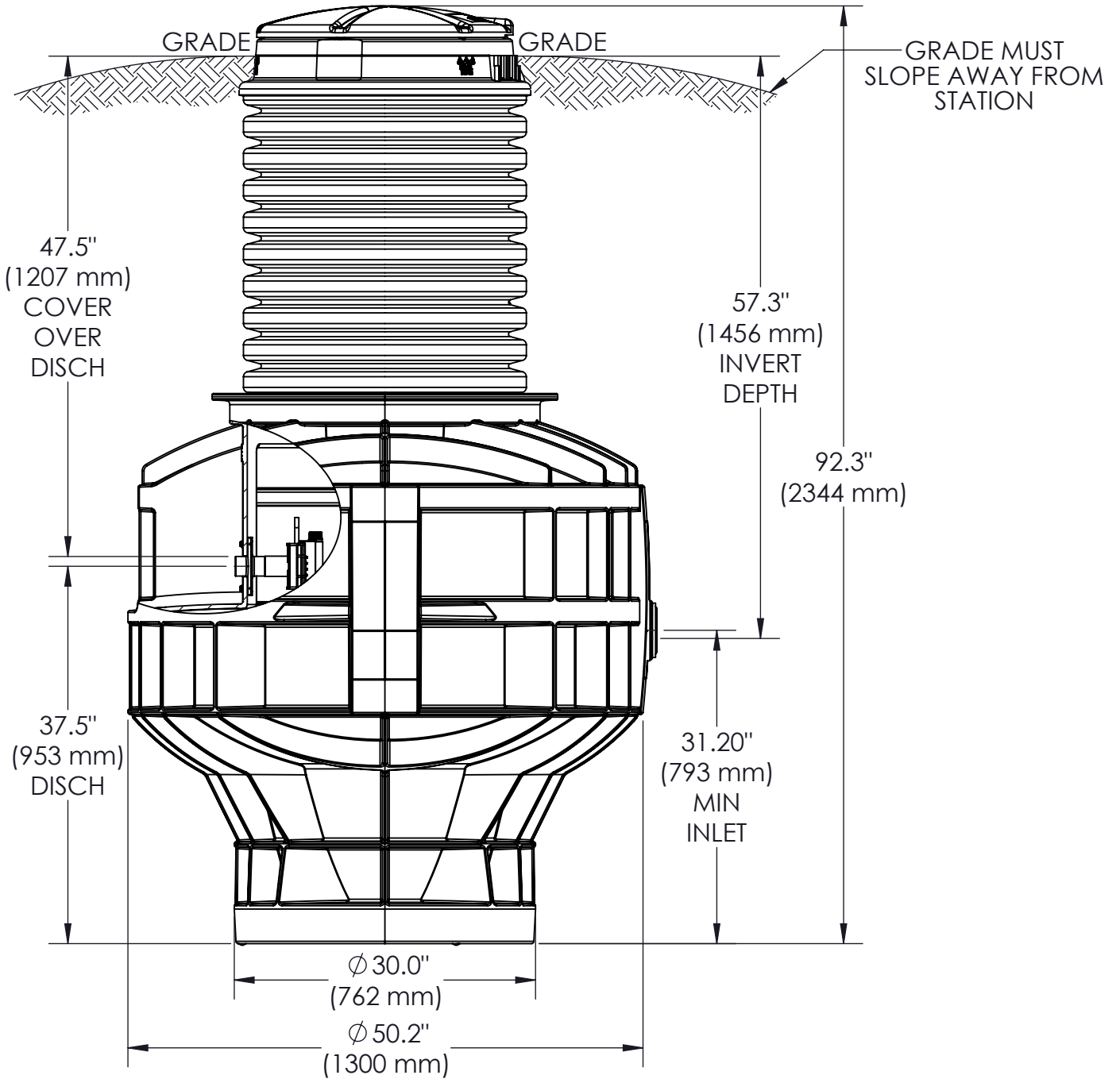
JVL	JG	6/25/2024	F	1:12
DR BY	CHK'D	DATE	ISSUE	SCALE



MODEL WH231-73

NA0059P04

# WH231-92



CONCRETE BALLAST MAY BE REQUIRED  
SEE INSTALLATION INSTRUCTIONS FOR DETAILS

NOTE: DIMENSIONS ARE FOR REFERENCE ONLY

DISCHARGE: 1-1/4" NPT, SS

INLET: EPDM GROMMET FOR 4" DWV  
PIPE (STANDARD)



JVL	JG	6/25/2024	F	1:15
DR BY	CHK'D	DATE	ISSUE	SCALE



MODEL WH231

NA0059P05