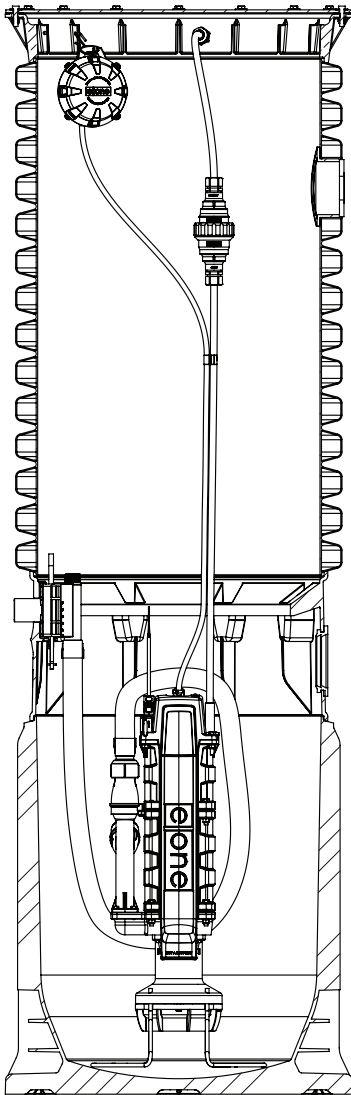


## WH101F



### General Features

The model WH101F grinder pump station is a complete unit that includes: the grinder pump, check valve, HDPE (high density polyethylene) tank, controls, and alarm panel. This station is designed for areas where high floodplain conditions occur. The WH101F is a watertight, sealed station capable of sustaining a 15-foot flood above the top of the station. This type of flood condition will not affect the continued operation of the pump; the homeowner should rely on uninterrupted service.

- Rated for flows of 700 gpd (2650 lpd)
- 100 gallons (379 liters) of capacity
- Standard outdoor heights range from 60 inches to 160 inches

The WH101F has a cable that connects the motor controls to the level controls through watertight penetrations.

### Operational Information

#### *Motor*

1 hp, 1,725 rpm, high torque, capacitor start, thermally protected, 120/240V, 60 Hz, 1 phase

#### *Inlet Connections*

4-inch inlet grommet standard for DWV pipe. Other inlet configurations available from the factory.

#### *Discharge Connections*

Pump discharge terminates in 1.25-inch NPT female thread or socket fitting. Can easily be adapted to 1.25-inch PVC pipe or any other material required by local codes.

#### *Discharge*

15 gpm at 0 psig (0.95 lps at 0 m)  
11 gpm at 40 psig (0.69 lps at 28 m)  
7.8 gpm at 80 psig (0.49 lps at 56 m)

### Accessories

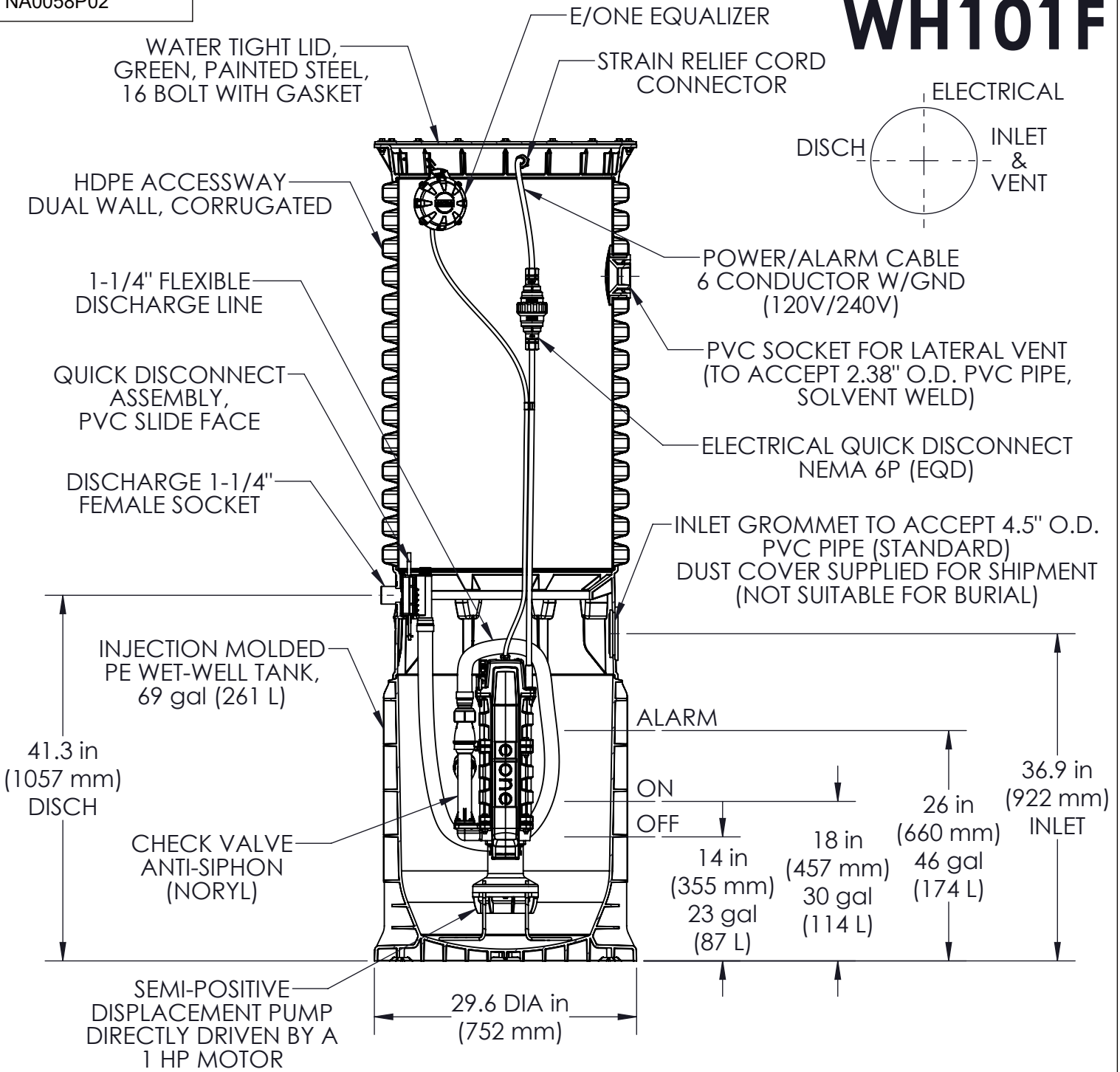
E/One requires that the Uni-Lateral, E/One's own stainless steel check valve, be installed between the grinder pump station and the street main for added protection against backflow.

Alarm panels are available with a variety of options, from basic monitoring to advanced notice of service requirements.

The Remote Sentry is ideal for installations where the alarm panel may be hidden from view.

NA0058P02

# WH101F



CONCRETE BALLAST NOT REQUIRED  
 NOTE: DIMENSIONS ARE FOR REF ONLY

JVL	JG	9/15/2023	E	1:16
DR BY	CHK'D	DATE	ISSUE	SCALE

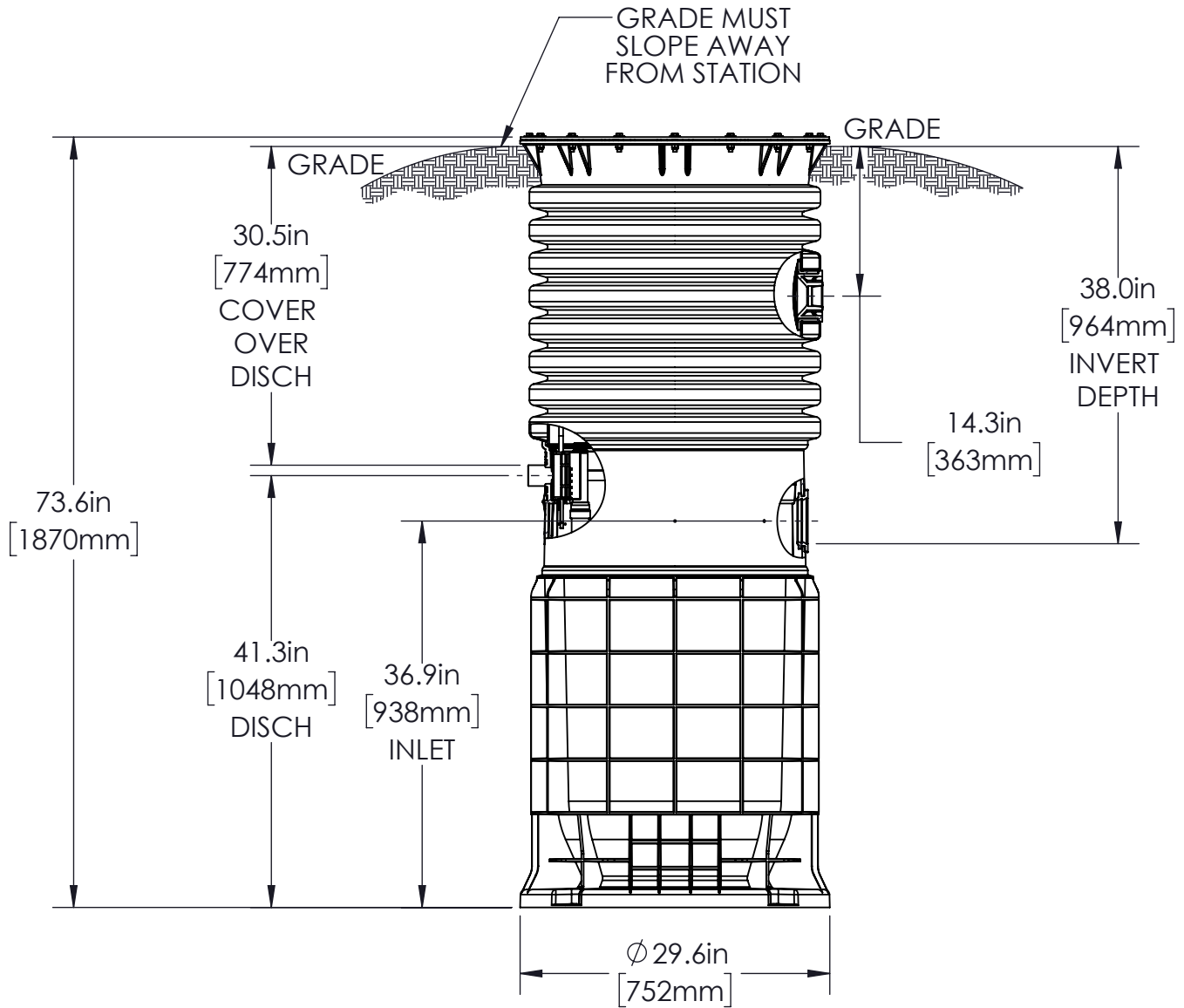


MODEL WH101F  
 DETAIL SHEET

NA0058P02



# WH101F-74



NOTE: DIMENSIONS ARE FOR REFERENCE ONLY

CONCRETE BALLAST NOT REQUIRED

DISCHARGE: 1-1/4in FEMALE SOCKET (STANDARD)

INLET: EPDM GROMMET FOR 4in DWV PIPE (STANDARD)

JVL	JG	9/15/2023	D	1:16
DR BY	CHK'D	DATE	ISSUE	SCALE



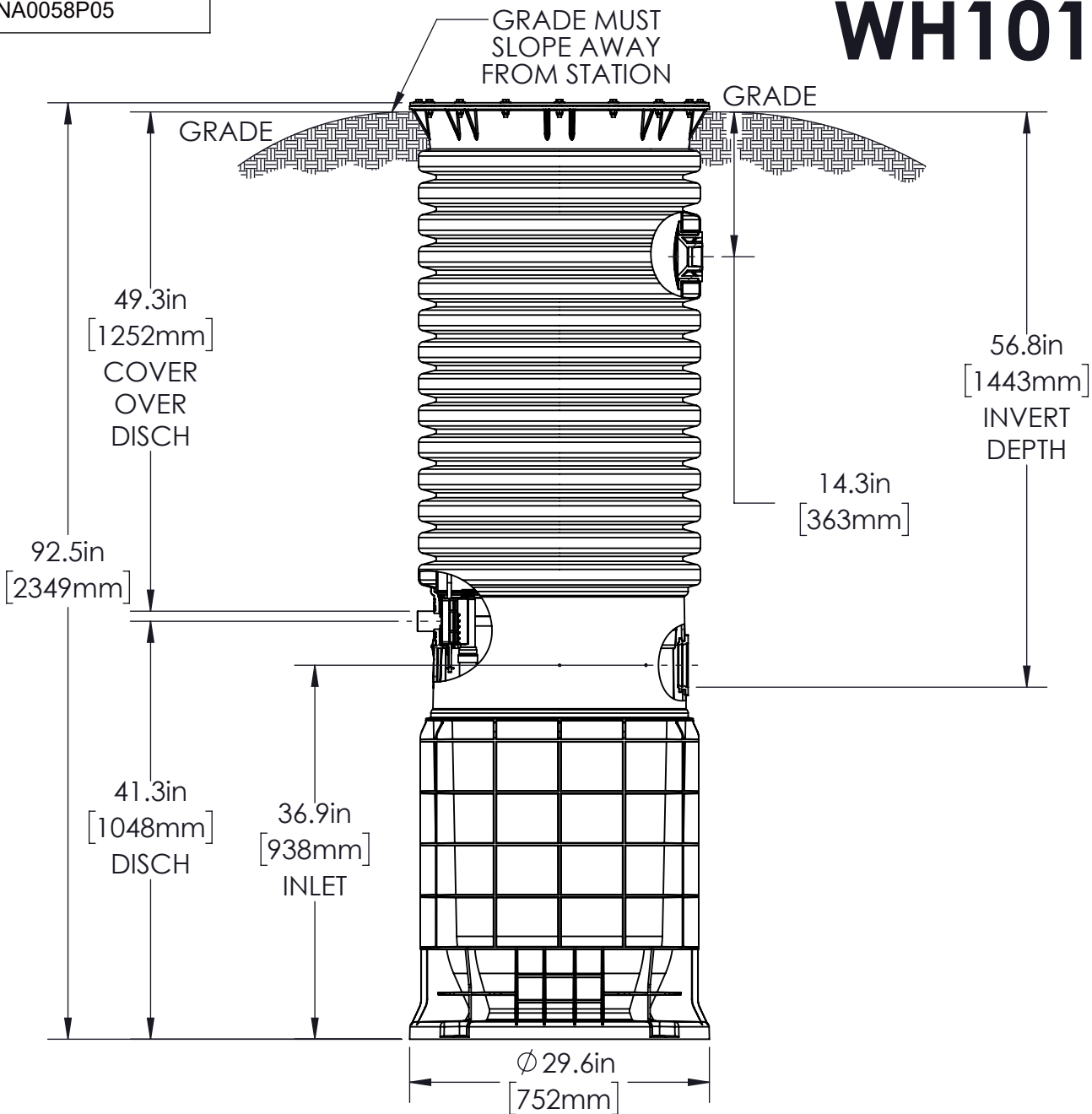
**SEWER SYSTEMS**

**MODEL WH101F-74  
CUT SHEET**

**NA0058P04**

NA0058P05

# WH101F-92



NOTE: DIMENSIONS ARE FOR REFERENCE ONLY

CONCRETE BALLAST NOT REQUIRED

DISCHARGE: 1-1/4in FEMALE SOCKET (STANDARD)

INLET: EPDM GROMMET FOR 4in DWV PIPE (STANDARD)

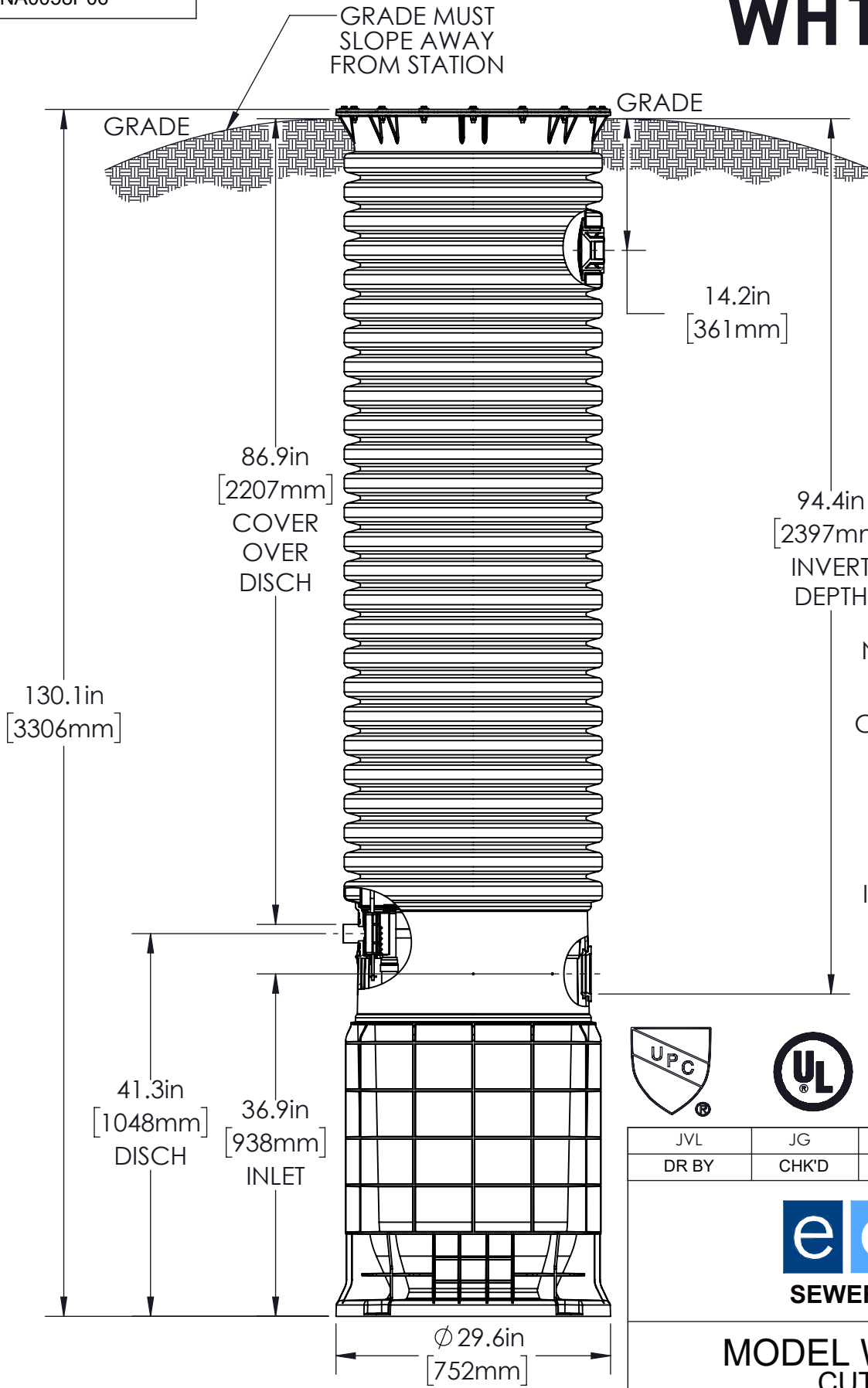
JVL	JG	9/15/2023	D	1:16
DR BY	CHK'D	DATE	ISSUE	SCALE



MODEL WH101F-92  
CUT SHEET

NA0058P05

# WH101F-129



NOTE: DIMENSIONS ARE FOR REFERENCE ONLY

CONCRETE BALLAST NOT REQUIRED

DISCHARGE: 1-1/4in FEMALE SOCKET (STANDARD)

INLET: EPDM GROMMET FOR 4in DWV PIPE (STANDARD)



JVL	JG	9/15/2023	D	1:16
DR BY	CHK'D	DATE	ISSUE	SCALE

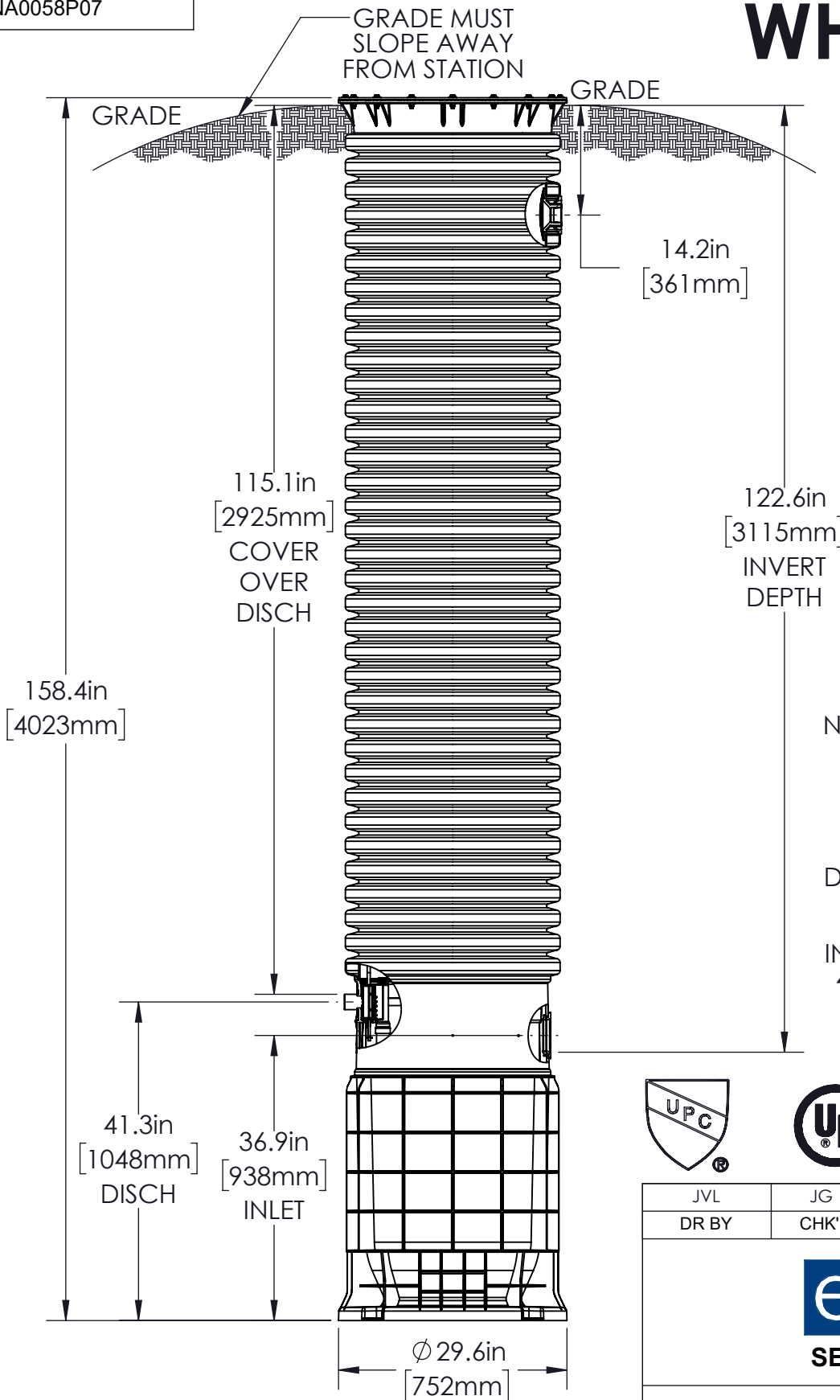


MODEL WH101F-129  
CUT SHEET

NA0058P06

NA0058P07

# WH101F-160



NOTE: DIMENSIONS ARE FOR REFERENCE ONLY

CONCRETE BALLAST NOT REQUIRED

DISCHARGE: 1-1/4in FEMALE SOCKET (STANDARD)

INLET: EPDM GROMMET FOR 4in DWV PIPE (STANDARD)



JVL	JG	9/15/2023	D	1:20
DR BY	CHK'D	DATE	ISSUE	SCALE



**SEWER SYSTEMS**

**MODEL WH101F-160  
CUT SHEET**

**NA0058P07**