

DH502

General Features

The model DH502 grinder pump station is a complete unit that includes: two grinder pumps, check valve, FRP (fiberglass reinforced polyester) tank, controls, and alarm panel. A single DH502 is ideal for up to nine, average single-family homes and can also be used for up to 24 average single-family homes where codes allow and with consent of the factory.

- Rated for flows of 6000 gpd (22,714 lpd)
- 500 gallons (1893 liters) of capacity
- For outdoor installation
- Standard outdoor heights range from 104 inches to 160 inches

The DH502 has a cable that connects the motor controls to the level controls through watertight penetrations.

Operational Information

Motor

1 hp, 1,725 rpm, high torque, capacitor start, thermally protected, 120/240V, 60 Hz, 1 phase

Inlet Connections

4-inch inlet grommet standard for DWV pipe. Other inlet configurations available from the factory.

Discharge Connections

Pump discharge terminates in 1.25-inch NPT female thread. Can easily be adapted to 1.25-inch PVC pipe or any other material required by local codes.

Discharge

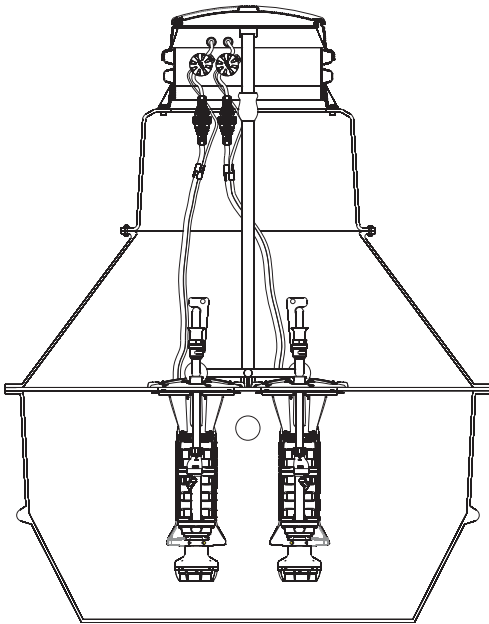
15 gpm at 0 psig (0.95 lps at 0 m)
11 gpm at 40 psig (0.69 lps at 28 m)
7.8 gpm at 80 psig (0.49 lps at 56 m)

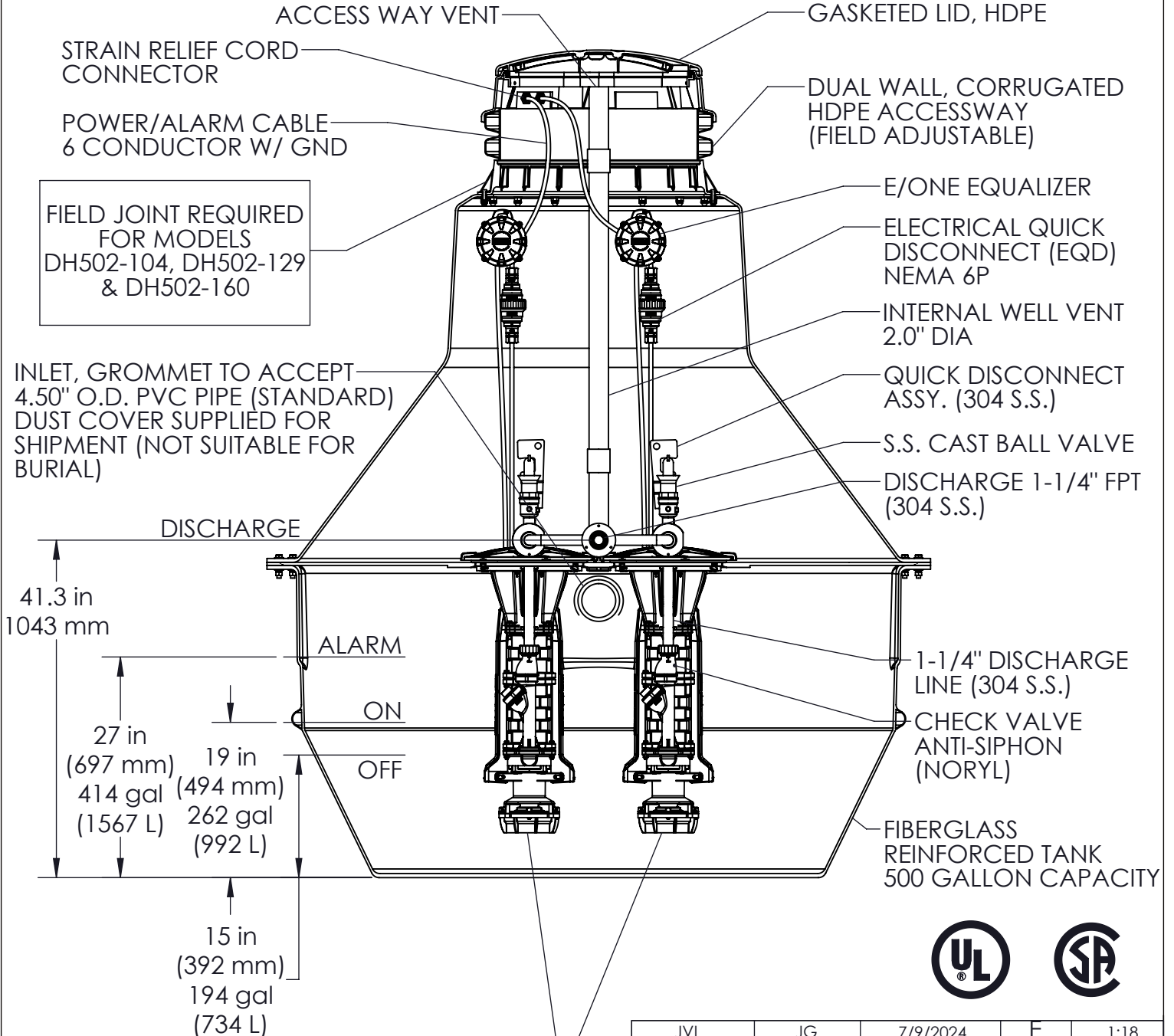
Accessories

E/One requires that the Uni-Lateral, E/One's own stainless steel check valve, be installed between the grinder pump station and the street main for added protection against backflow.

Alarm panels are available with a variety of options, from basic monitoring to advanced notice of service requirements.

The Remote Sentry is ideal for installations where the alarm panel may be hidden from view.





FIELD JOINT REQUIRED FOR MODELS DH502-104, DH502-129 & DH502-160

INLET, GROMMET TO ACCEPT 4.50" O.D. PVC PIPE (STANDARD) DUST COVER SUPPLIED FOR SHIPMENT (NOT SUITABLE FOR BURIAL)

DISCHARGE

41.3 in
1043 mm

27 in
(697 mm)
414 gal
(1567 L)

19 in
(494 mm)
262 gal
(992 L)

15 in
(392 mm)
194 gal
(734 L)

ALARM

ON

OFF

GASKETED LID, HDPE

DUAL WALL, CORRUGATED HDPE ACCESSWAY (FIELD ADJUSTABLE)

E/ONE EQUALIZER

ELECTRICAL QUICK DISCONNECT (EQD) NEMA 6P

INTERNAL WELL VENT 2.0" DIA

QUICK DISCONNECT ASSY. (304 S.S.)

S.S. CAST BALL VALVE

DISCHARGE 1-1/4" FPT (304 S.S.)

1-1/4" DISCHARGE LINE (304 S.S.)

CHECK VALVE ANTI-SIPHON (NORYL)

FIBERGLASS REINFORCED TANK 500 GALLON CAPACITY



SEMI-POSITIVE DISPLACEMENT TYPE PUMP EACH DIRECTLY DRIVEN BY A 1 HP MOTOR

CONCRETE BALLAST MAY BE REQUIRED SEE INSTALLATION INSTRUCTIONS FOR DETAILS

NOTE: DIMENSIONS ARE FOR REFERENCE ONLY

JVL	JG	7/9/2024	E	1:18
DR BY	CHK'D	DATE	ISSUE	SCALE

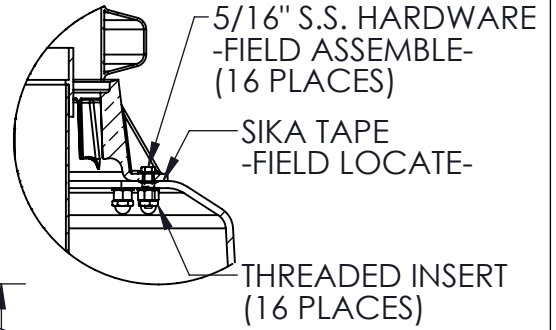


MODEL DH502
DETAIL SHEET

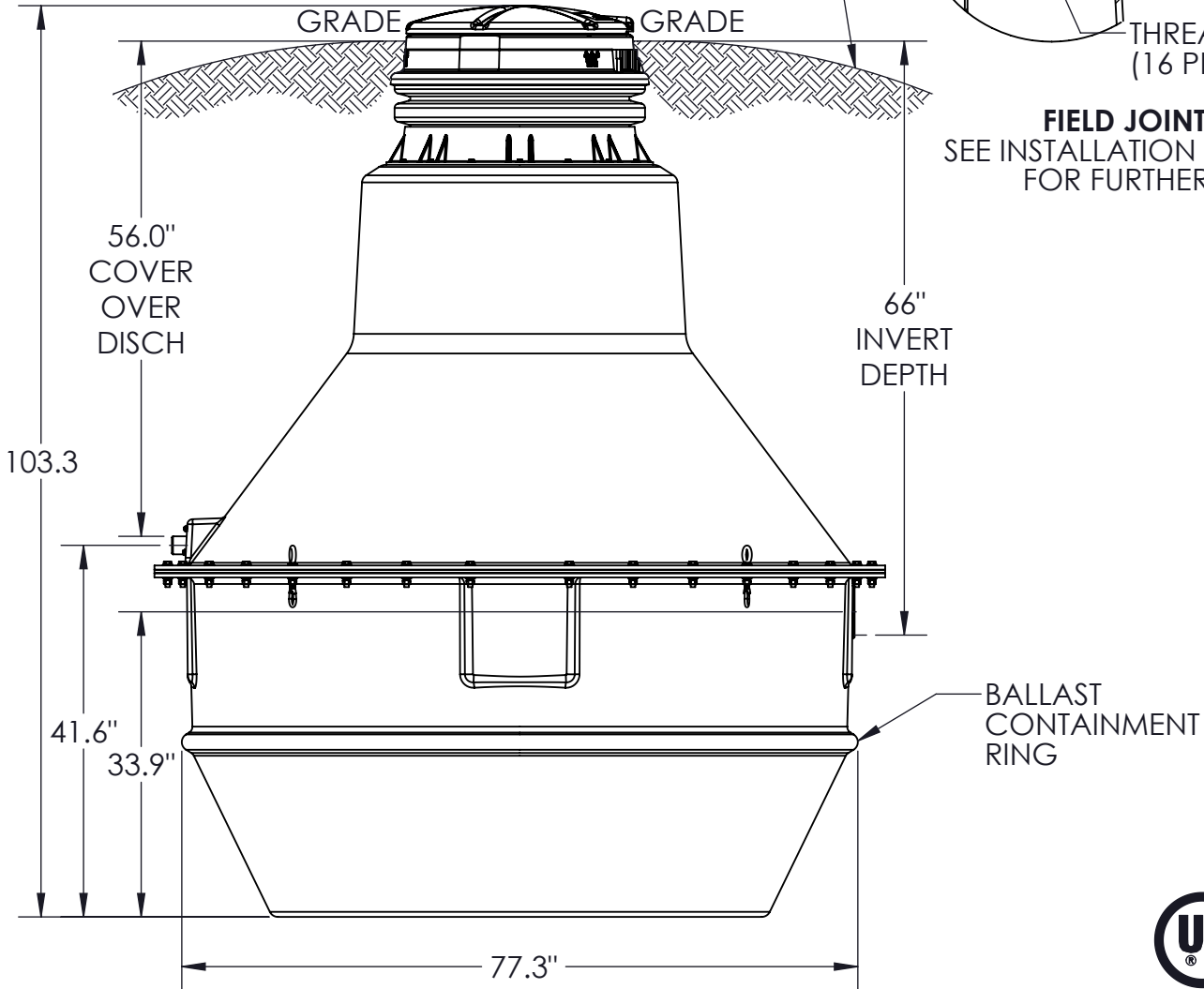
NA0054P02

DH502-104

GRADE MUST SLOPE AWAY FROM STATION



FIELD JOINT DETAIL
SEE INSTALLATION INSTRUCTIONS FOR FURTHER DETAILS



CONCRETE BALLAST MAY BE REQUIRED
SEE INSTALLATION INSTRUCTIONS FOR DETAILS

NOTE: DIMENSIONS ARE FOR REFERENCE ONLY

DISCHARGE: 1-1/4" FEMALE PIPE THREAD

INLET: EPDM GROMMET FOR 4" DWV PIPE
(STANDARD)

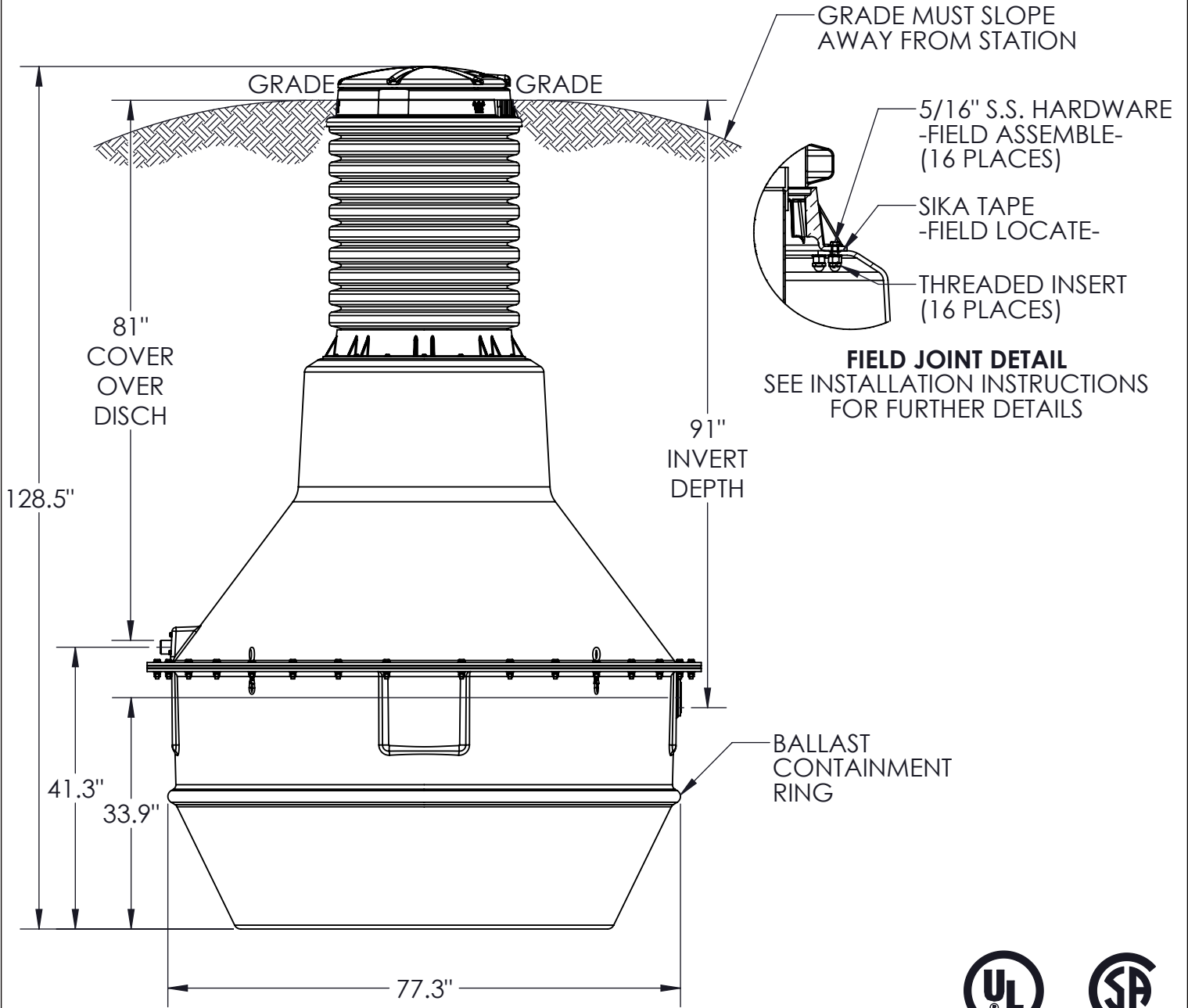
JVL	JG	7/9/2024	C	1:20
DR BY	CHK'D	DATE	ISSUE	SCALE



MODEL DH502-104

NA0054P04

DH502-129



JVL	JG	7/9/2024	C	1:22
DR BY	CHK'D	DATE	ISSUE	SCALE

CONCRETE BALLAST MAY BE REQUIRED
SEE INSTALLATION INSTRUCTIONS FOR DETAILS

NOTE: DIMENSIONS ARE FOR REFERENCE ONLY

DISCHARGE: 1-1/4" FEMALE PIPE THREAD

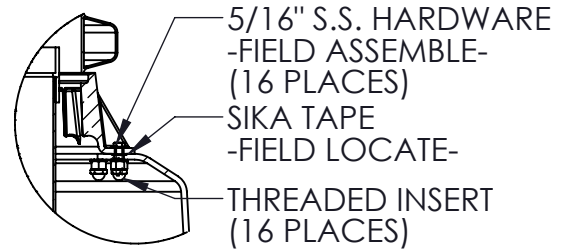
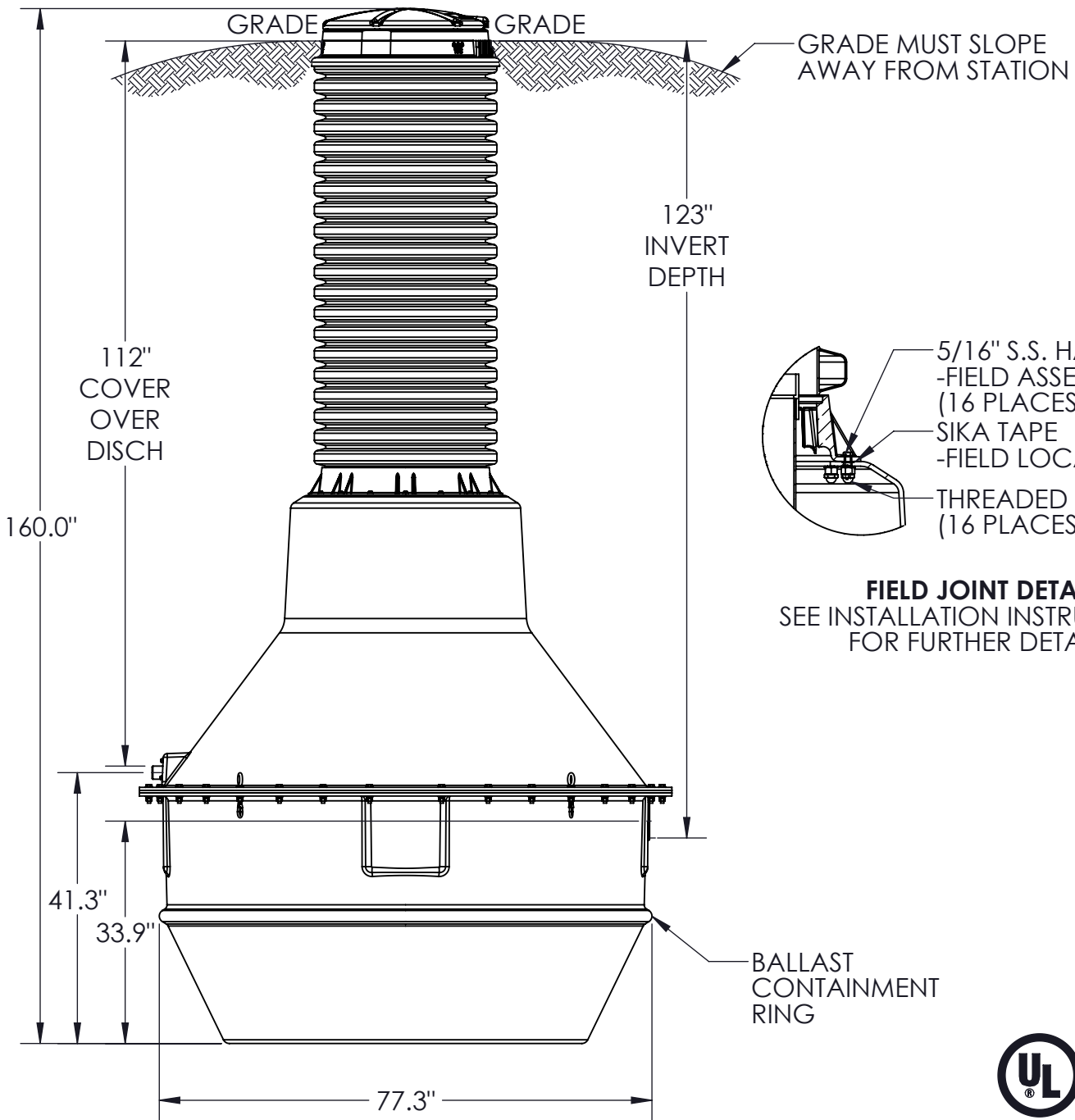
INLET: EPDM GROMMET FOR 4" DWV PIPE
(STANDARD)



MODEL DH502-129

NA0054P05

DH502-160



FIELD JOINT DETAIL
SEE INSTALLATION INSTRUCTIONS FOR FURTHER DETAILS



JVL	JG	7/9/2024	C	1:24
DR BY	CHK'D	DATE	ISSUE	SCALE

CONCRETE BALLAST MAY BE REQUIRED
SEE INSTALLATION INSTRUCTIONS FOR DETAILS

NOTE: DIMENSIONS ARE FOR REFERENCE ONLY

DISCHARGE: 1-1/4" FEMALE PIPE THREAD

INLET: EPDM GROMMET FOR 4" DWV PIPE
(STANDARD)



MODEL DH502-160

NA0054P06